

INCIDENT TRENDS – 2023Q2

OCS - GULF OF MEXICO

RFO - Office of Safety Management

24 August 2023



Bureau of Safety and Environmental Enforcement

Promoting Safety, Protecting the Environment and Conserving Offshore Resources



OVERVIEW

- Recent Safety Alert
- Industry Incident Trends 2023Q2 – April / May / June
- Recent Completed District Investigations

THEME – DON'T BE AFRAID TO BE A BEGINNER



BSEE SAFETY ALERT 467

- Advising employees and contractors on the prevention and treatment of heat exhaustion and heat stroke.
- Considering implementing work policies requiring periodic breaks when working outside in high temperatures. According to the CDC's National Institute for Occupational Safety and Health (NIOSH), when the heat index is 100°F, a 15minute break should be taken for each 45 minutes of moderate intensity work. For additional information refer to CDC's Work/Rest Schedules fact sheet.
- Exercising Stop Work Authority when necessary.
- While conducting a job safety analysis, identifying existing or potential safety, health, and environmental hazards associated with each step and considering using the OSHA-NIOSH Heat Safety Tool application.



Safety Alert No. 467
Aug. 22, 2023

SAFETY ALERT

Contact: bscepublicaffairs@bsee.gov
Phone: (800) 200-4853

Heat Advisory – Heat-Related Illnesses Occurring Offshore

HEAT-RELATED ILLNESSES	
WHAT TO LOOK FOR	WHAT TO DO
HEAT STROKE <ul style="list-style-type: none"> • High body temperature (103°F or higher) • Hot, red, dry, or clammy skin • Fast, strong pulse • Headache • Dizziness • Nausea • Confusion • Losing consciousness (passing out) 	
HEAT EXHAUSTION <ul style="list-style-type: none"> • Heavy sweating • Cold, pale, and clammy skin • Fast, weak pulse • Nausea or vomiting • Muscle cramps • Tiredness or weakness • Dizziness • Headache • Fainting (passing out) 	
HEAT CRAMPS <ul style="list-style-type: none"> • Heavy sweating during intense exercise • Muscle pain or spasms 	
SUNBURN <ul style="list-style-type: none"> • Painful, red, and warm skin • Blisters on the skin 	
HEAT RASH <ul style="list-style-type: none"> • Red clusters of small blisters that look like pimples on the skin (usually on the neck, chest, groin, or in elbow creases) 	
WHAT TO DO <ul style="list-style-type: none"> • Call 911 right away—heat stroke is a medical emergency • Move the person to a cooler place • Help lower the person's temperature with cool cloths or a cool bath • Do not give the person anything to drink 	
WHAT TO DO <ul style="list-style-type: none"> • Move to a cool place • Loosen your clothes • Put cool, wet cloths on your body or take a cool bath • Sip water • Get medical help right away if: <ul style="list-style-type: none"> • You are throwing up • Your symptoms get worse • Your symptoms last longer than 1 hour 	
WHAT TO DO <ul style="list-style-type: none"> • Stop physical activity and move to a cool place • Drink water or a sports drink • Wait for cramps to go away before you do any more physical activity • Get medical help right away if: <ul style="list-style-type: none"> • Cramps last longer than 1 hour • You're on a low-sodium diet • You have heart problems 	
WHAT TO DO <ul style="list-style-type: none"> • Stay out of the sun until your sunburn heals • Put cool cloths on sunburned areas or take a cool bath • Put moisturizing lotion on sunburned areas • Do not break blisters 	
WHAT TO DO <ul style="list-style-type: none"> • Stay in a cool, dry place • Keep the rash dry • Use powder (like baby powder) to soothe the rash 	

Figure 1. www.cdc.gov





PENDING SAFETY ALERTS

1. Be A Safety Champion - Stay Out of the Line of Fire
2. BSEE Identifies Medical Evacuation and Emergency Hazards during Risk Based Inspections
3. Rental Equipment Emergency Shutdown Found in Bypass
4. Pipe Flange Malfunction on Firefighting System
5. 3 others in development

COMPLIANCE – 8/1/2023

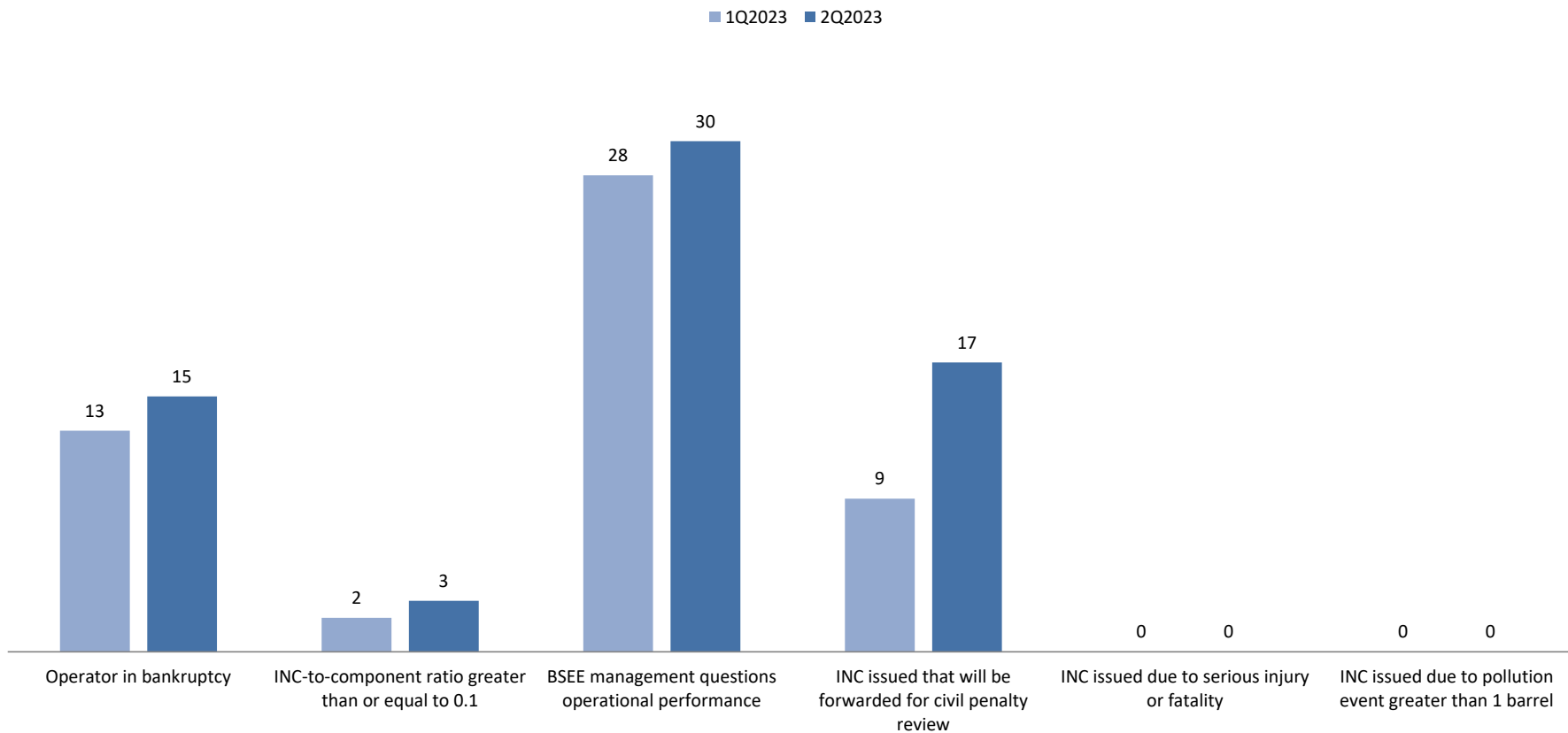


YEAR	INC:COMP	INC:INSP
2022	0.015	0.134
2023ytd	0.012	0.183
Difference	20%	36.57%

IOL INSPECTIONS – 2023Q2

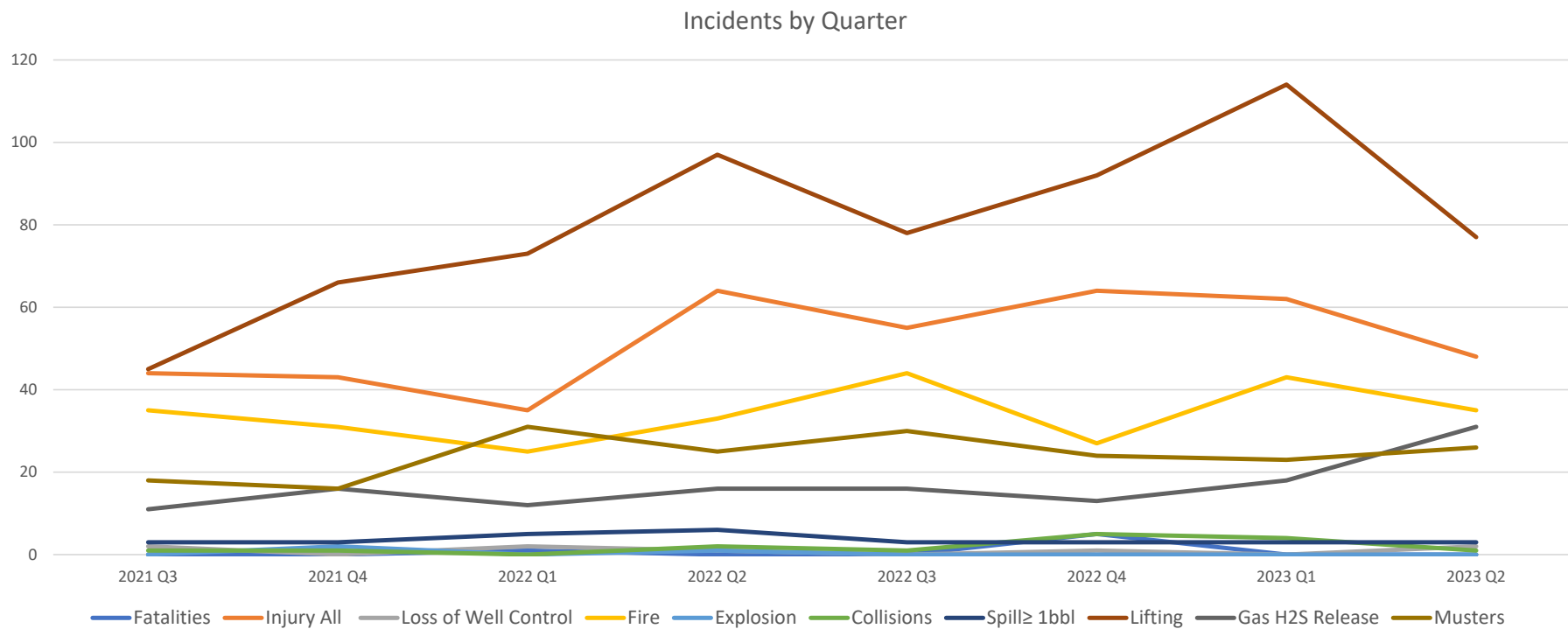


Total IOL Facilities by Type



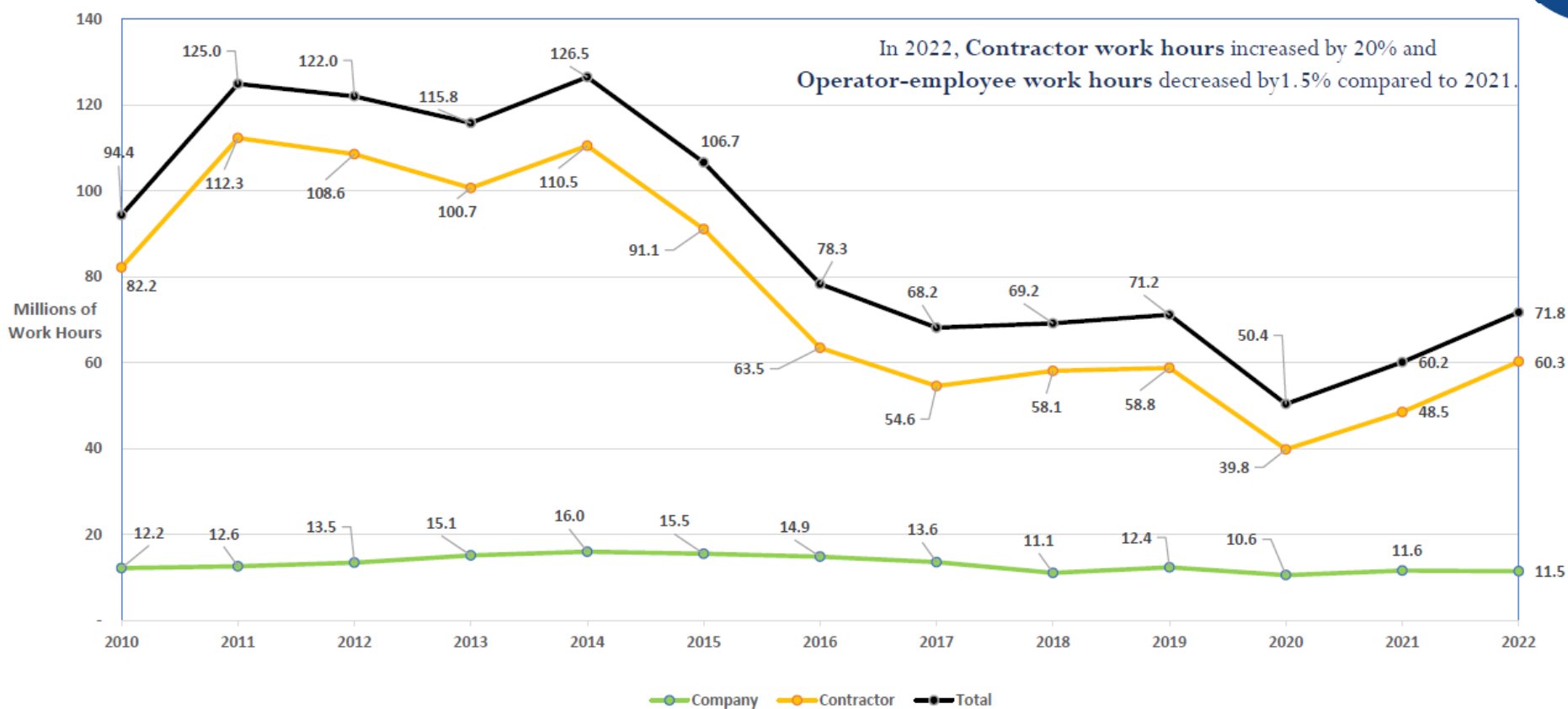


OCS INDUSTRY RATES BY ROLLING QUARTER

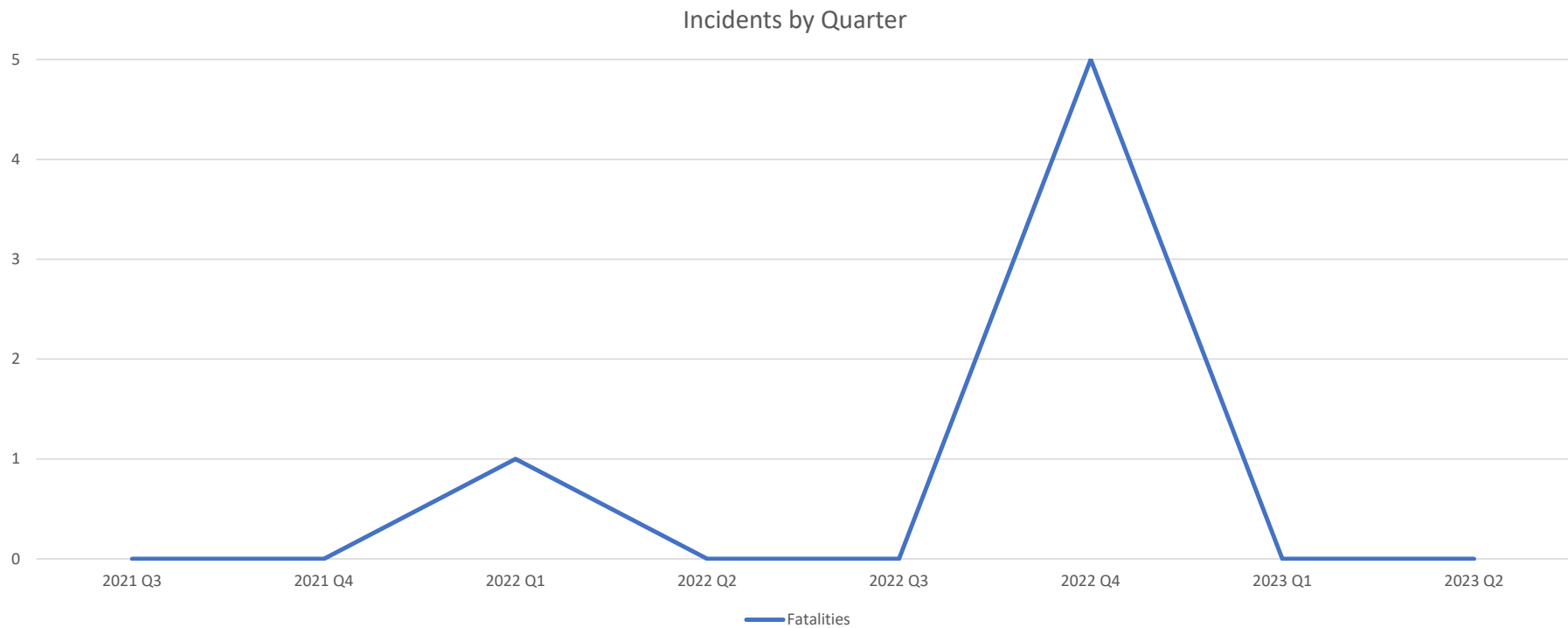




TOTAL OCS HOURS TRENDS

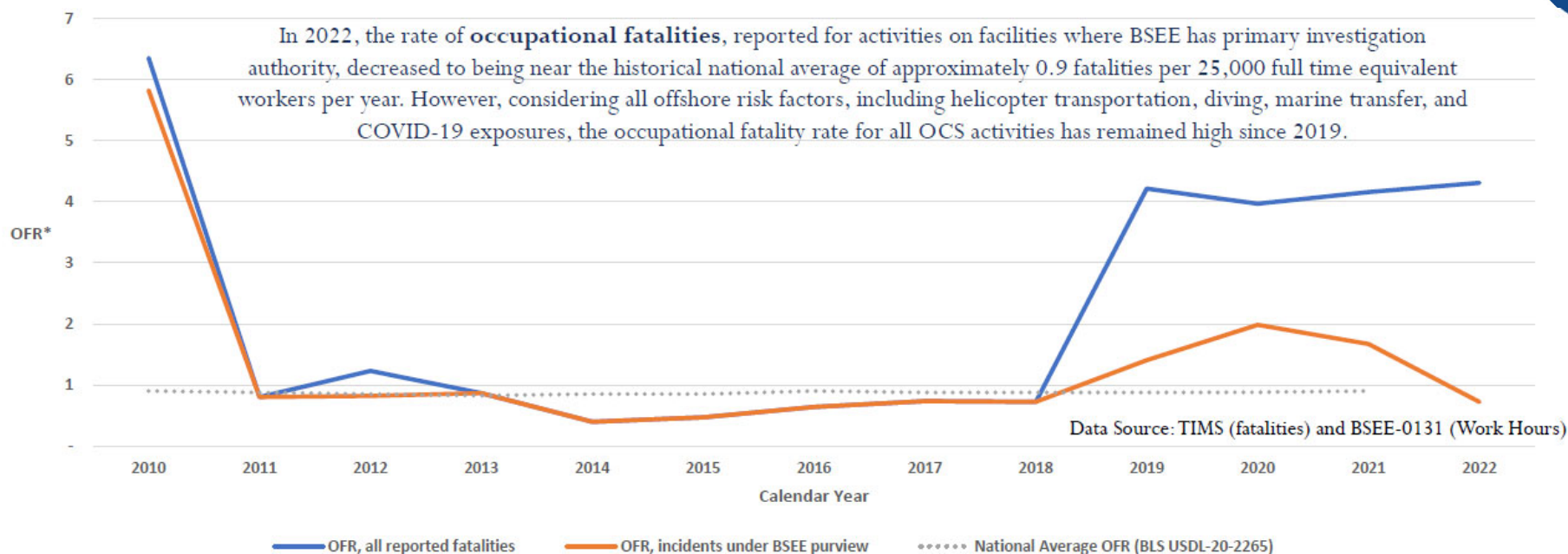


FATALITY RATES BY ROLLING QUARTER





FATALITY TRENDS



	2010	2011	2012	2013	2014	2015	2016	2017	2018	2019	2020	2021	2022
Operational Fatalities under BSEE purview:	11	2	2	2	1	1	1	1	1	2	4	5	5
Additional Occupational Fatalities in OCS operations:	1	0	1	0	0	0	0	0	0	4	2	2	1

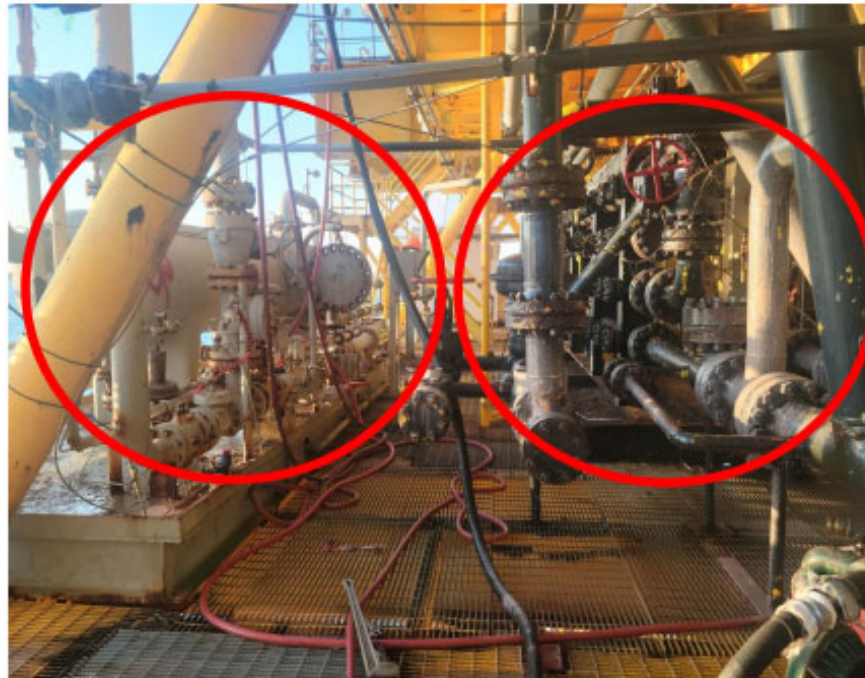
*Reported Occupational Fatalities per 25,000 FTE workers (or 50,000,000 work hours).

** All occupational fatalities that are reported to BSEE are reflected in the "All Reported Fatalities" line. Fatalities associated with diving, helicopter, and lifeboat incidents are investigated by other federal agencies and therefore excluded from "incidents under BSEE purview," as are the three fatalities in 2021 associated with COVID 19 exposures. This chart excludes non occupational fatalities reported to BSEE, such as from activities conducted during non-work shift times or from chronic, preexisting conditions.

HIPO NEAR MISS – 7/3/2023

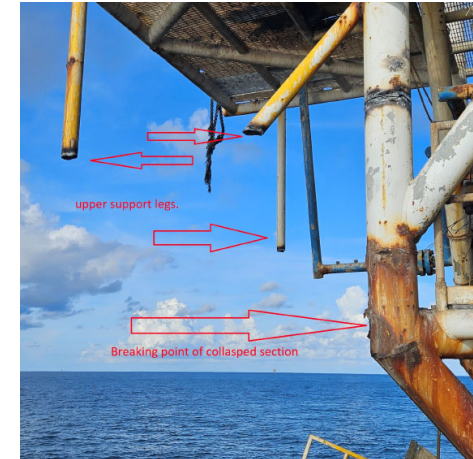


Valve Assembly

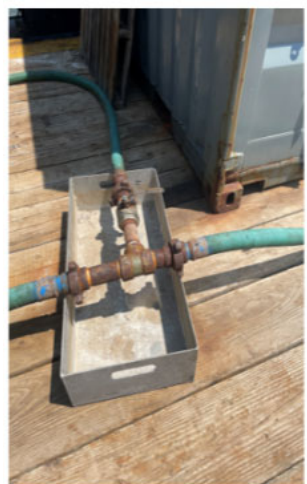
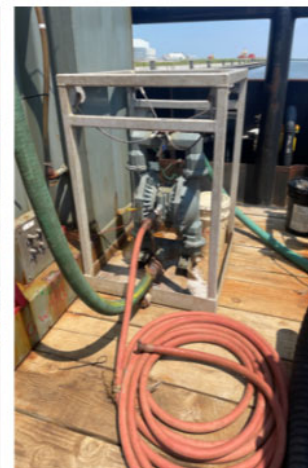
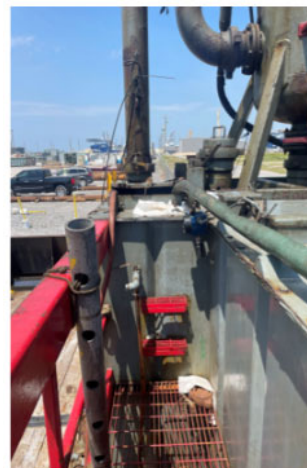


Header and Separator

HIPO NEAR MISS – 7/4/23

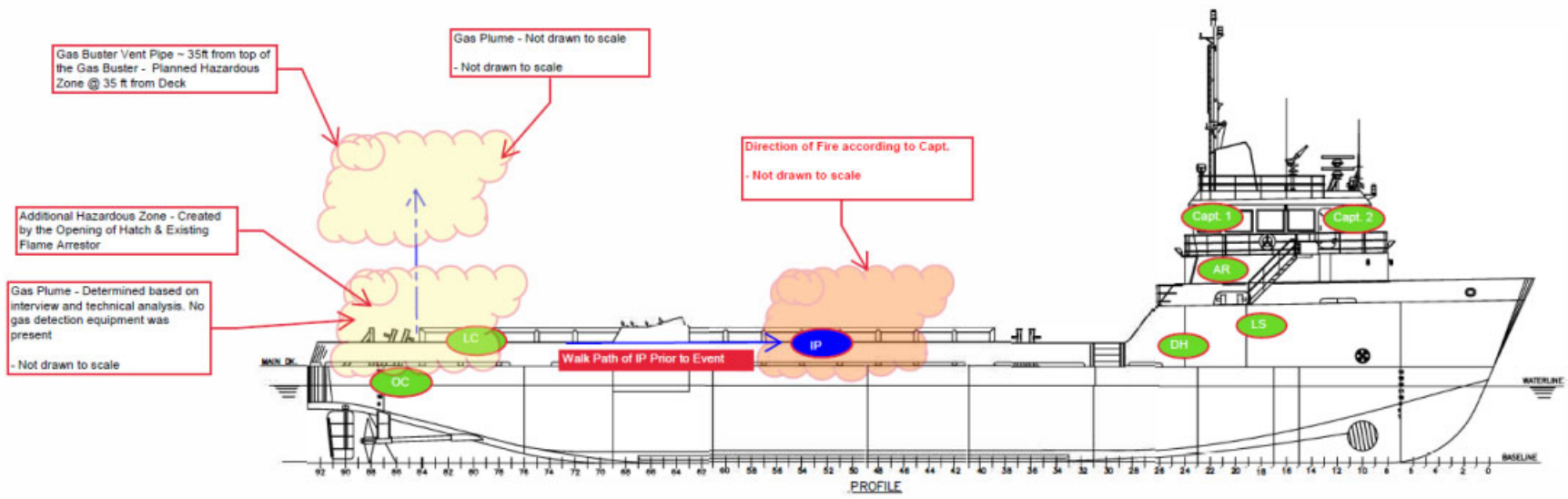


HIPO NEAR MISS – 6/3/2023





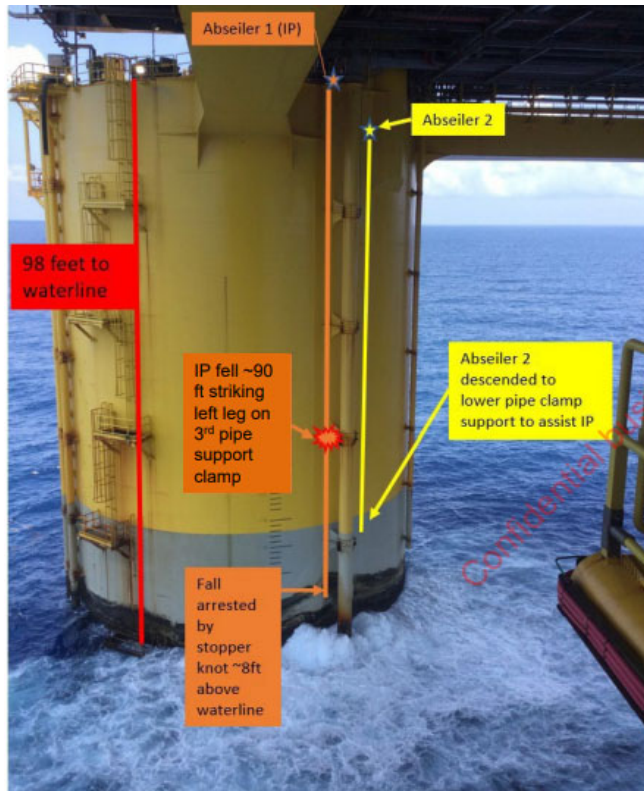
HIPO NEAR MISS – 6/3/2023



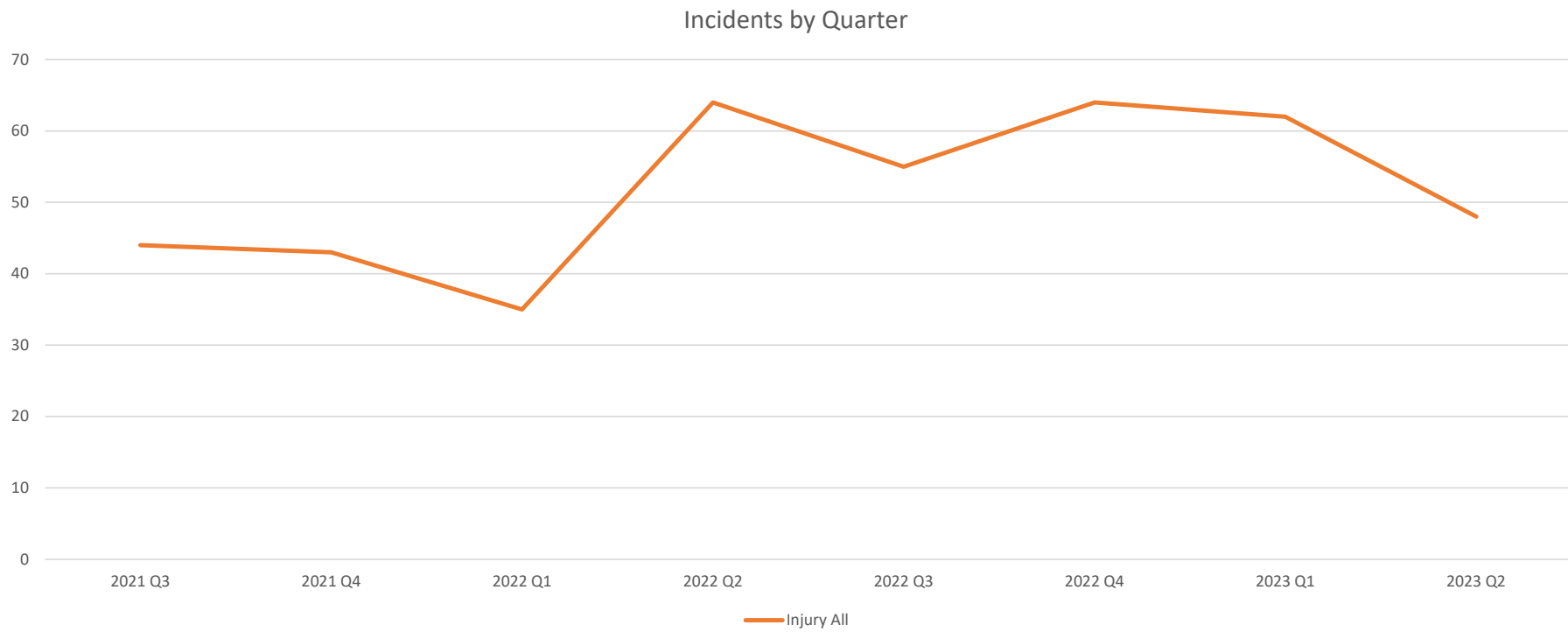
Does not include representation of the equipment required for pipeline bleed-off, flushing, and fluid storage.



HIPO NEAR MISS – 5/31/2023

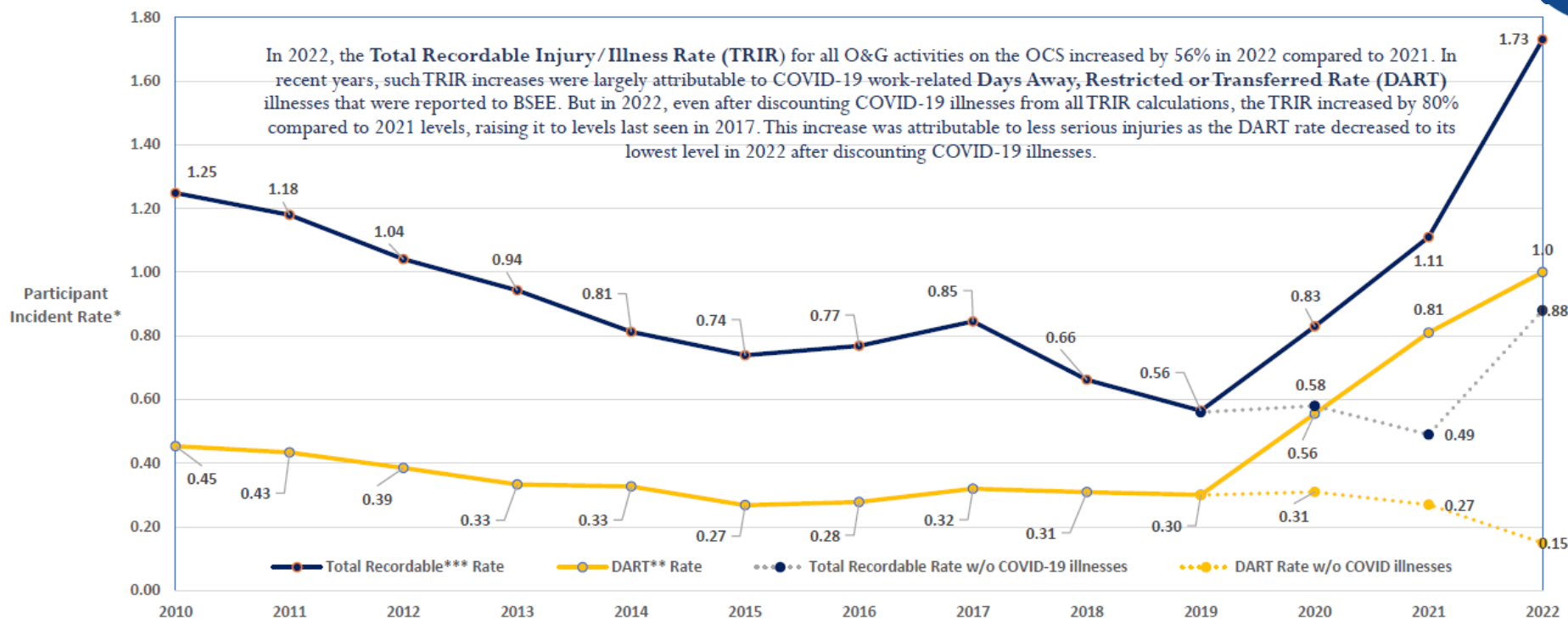


INJURY RATES BY ROLLING QUARTER

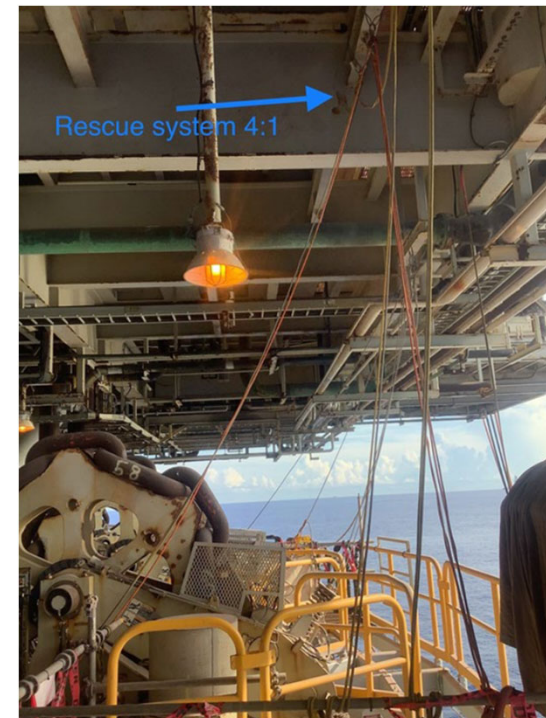
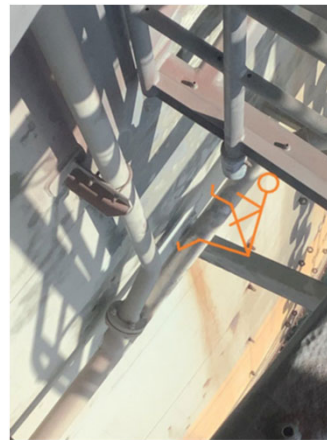




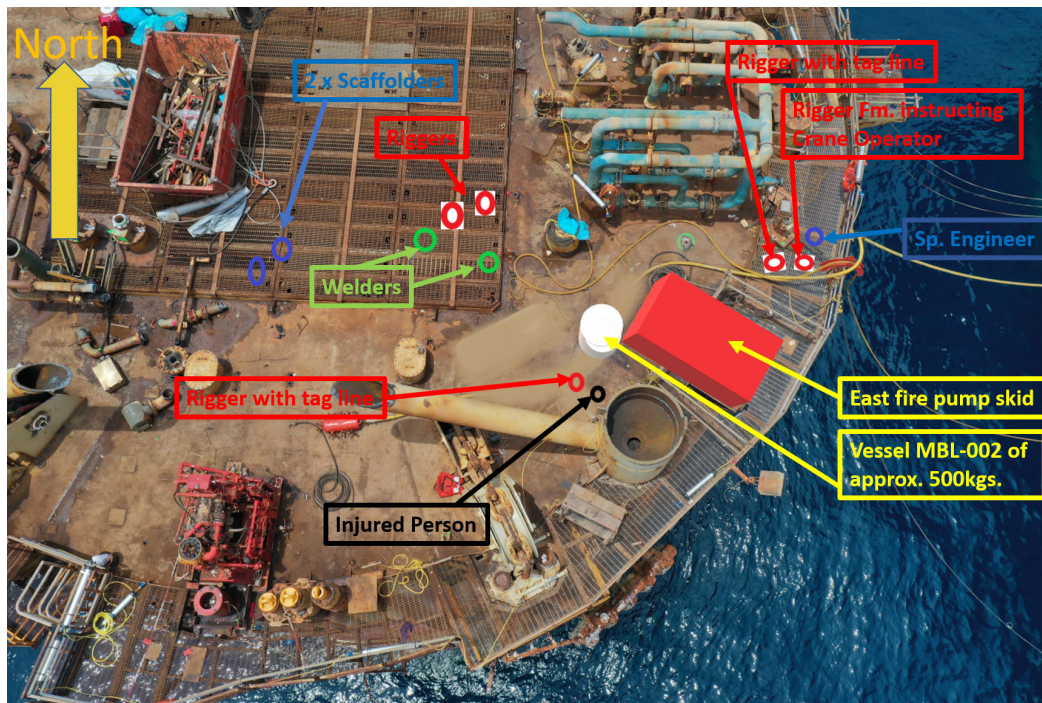
INJURY TRENDS



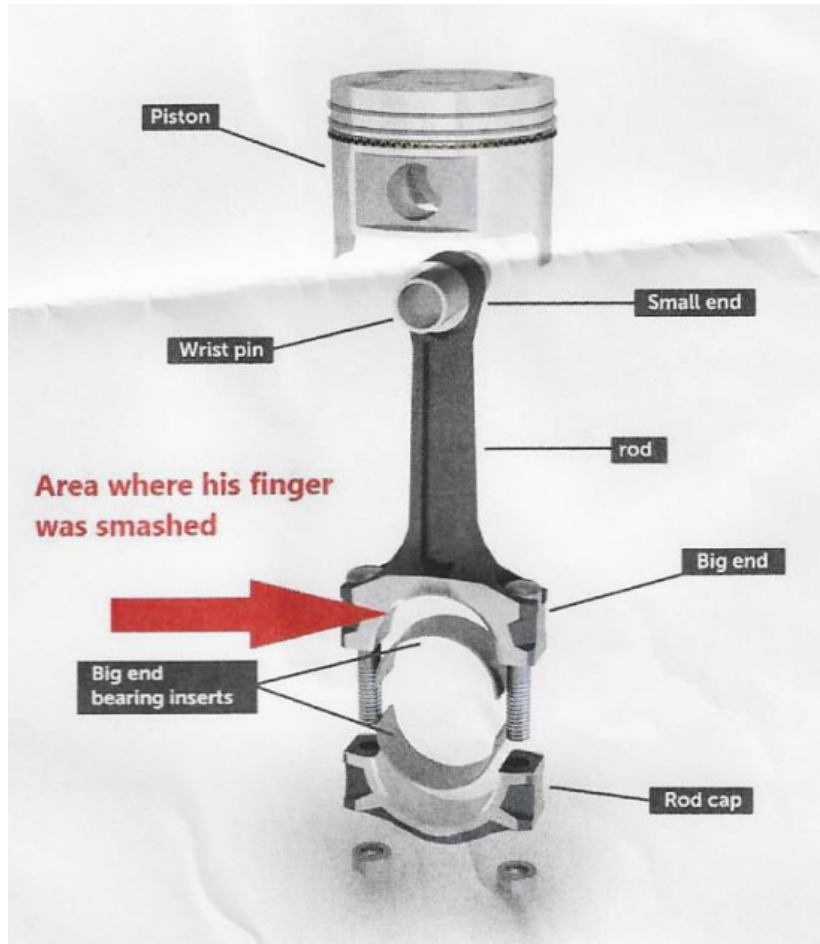
INJURY LTA>3 – 7/7/2023



INJURY, LTA >3 – 7/24/2023



INJURY, LTA>3 – 6/17/23



Description:
Employee's position at time of incident.

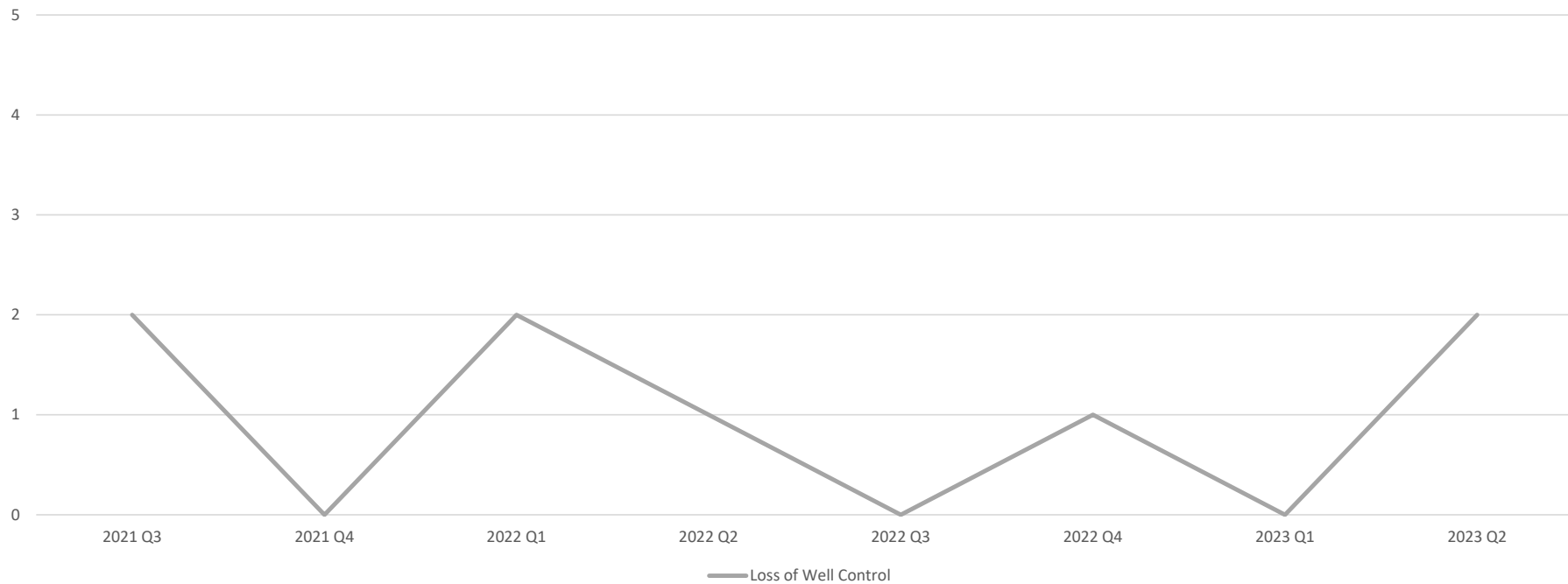


Description:
Side view of compressor block with rod caps.

LWC RATES BY ROLLING QUARTER



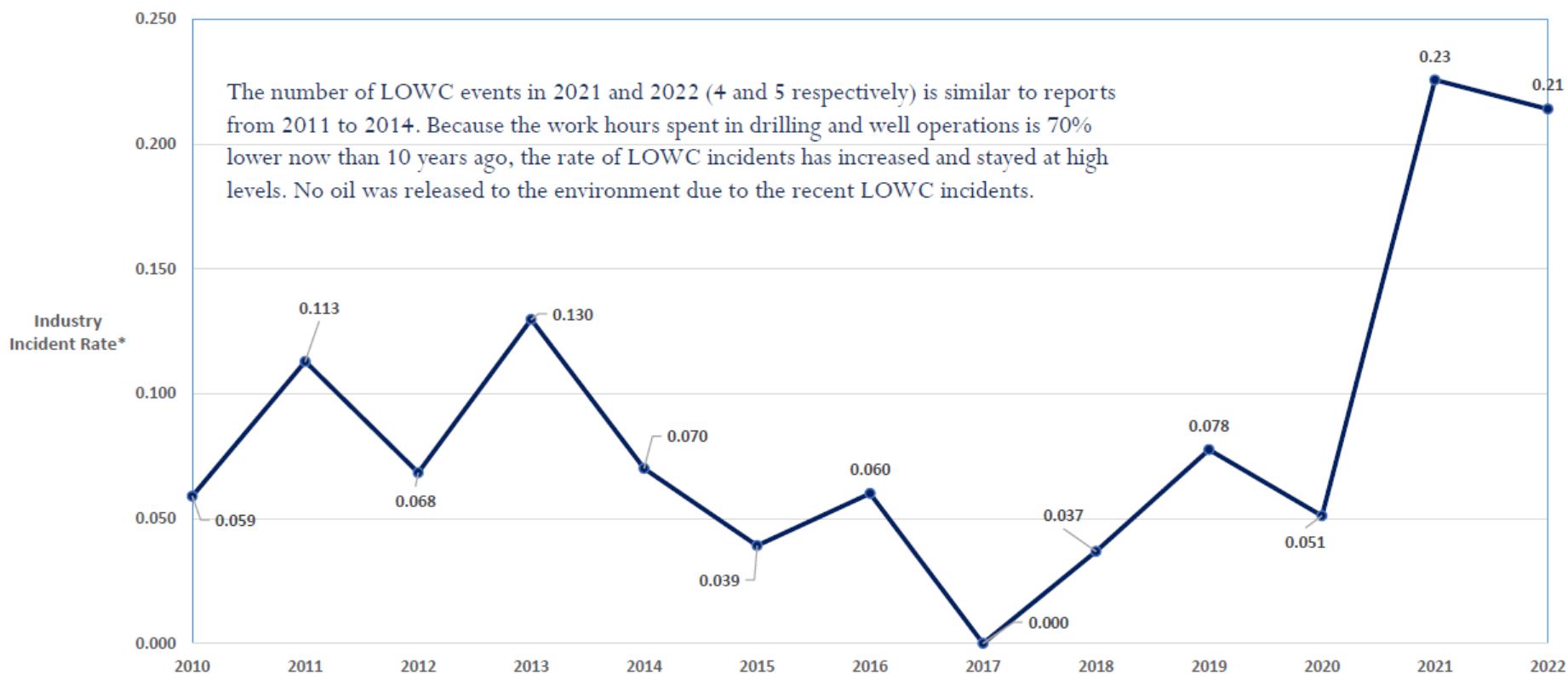
Incidents by Quarter





LWC TRENDS

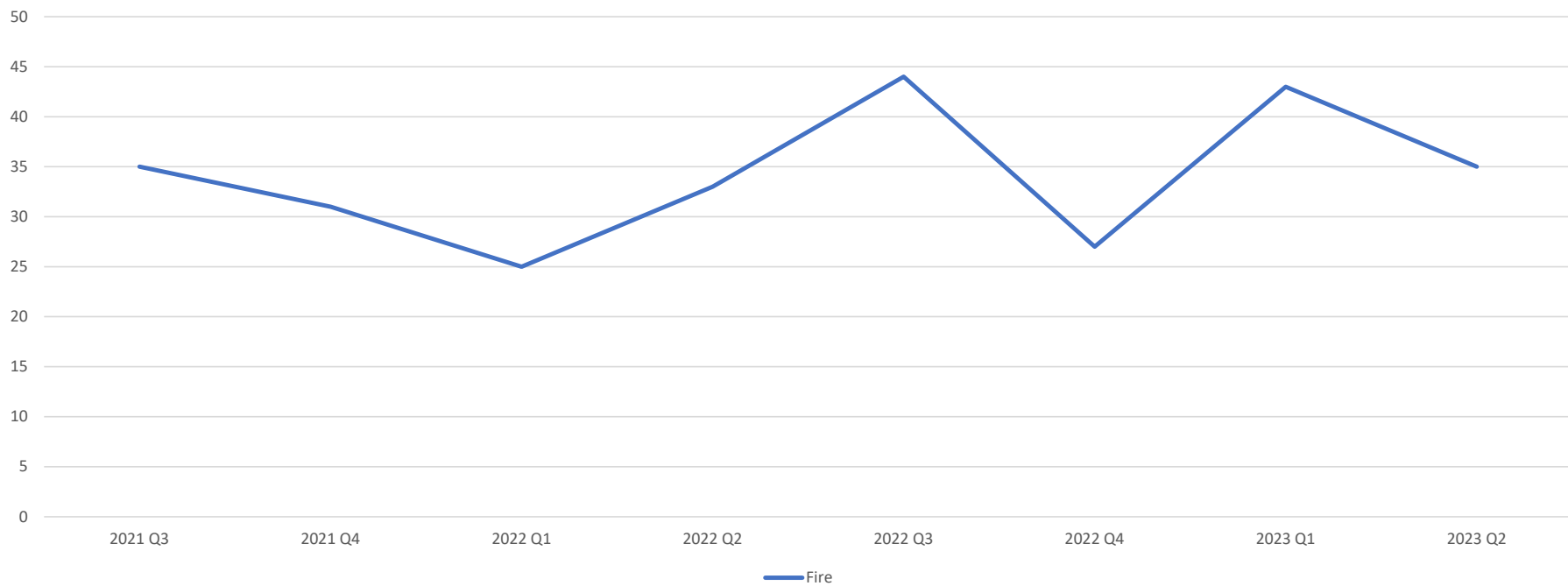
The number of LOWC events in 2021 and 2022 (4 and 5 respectively) is similar to reports from 2011 to 2014. Because the work hours spent in drilling and well operations is 70% lower now than 10 years ago, the rate of LOWC incidents has increased and stayed at high levels. No oil was released to the environment due to the recent LOWC incidents.



FIRE RATES BY ROLLING QUARTER

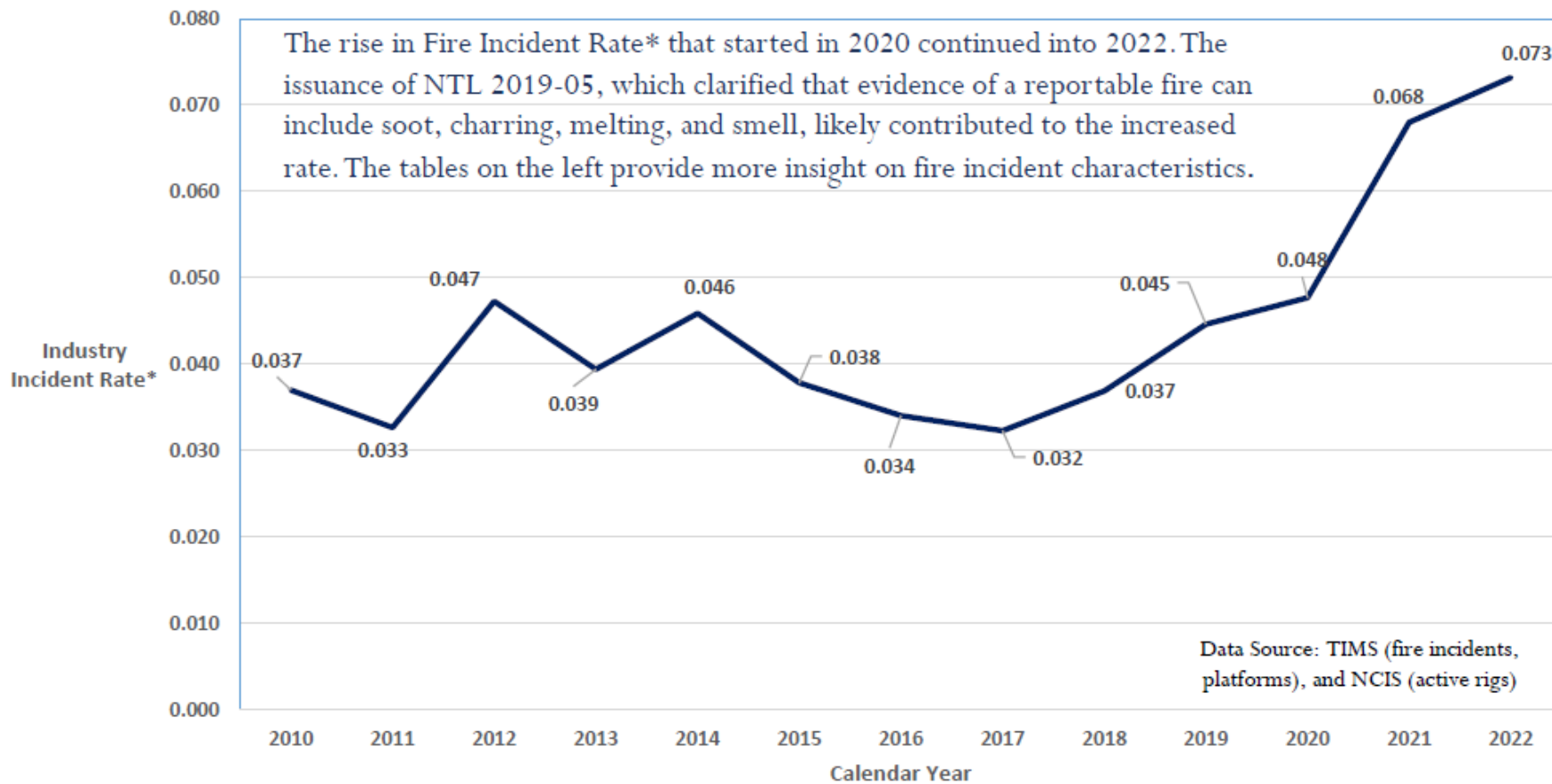


Incidents by Quarter

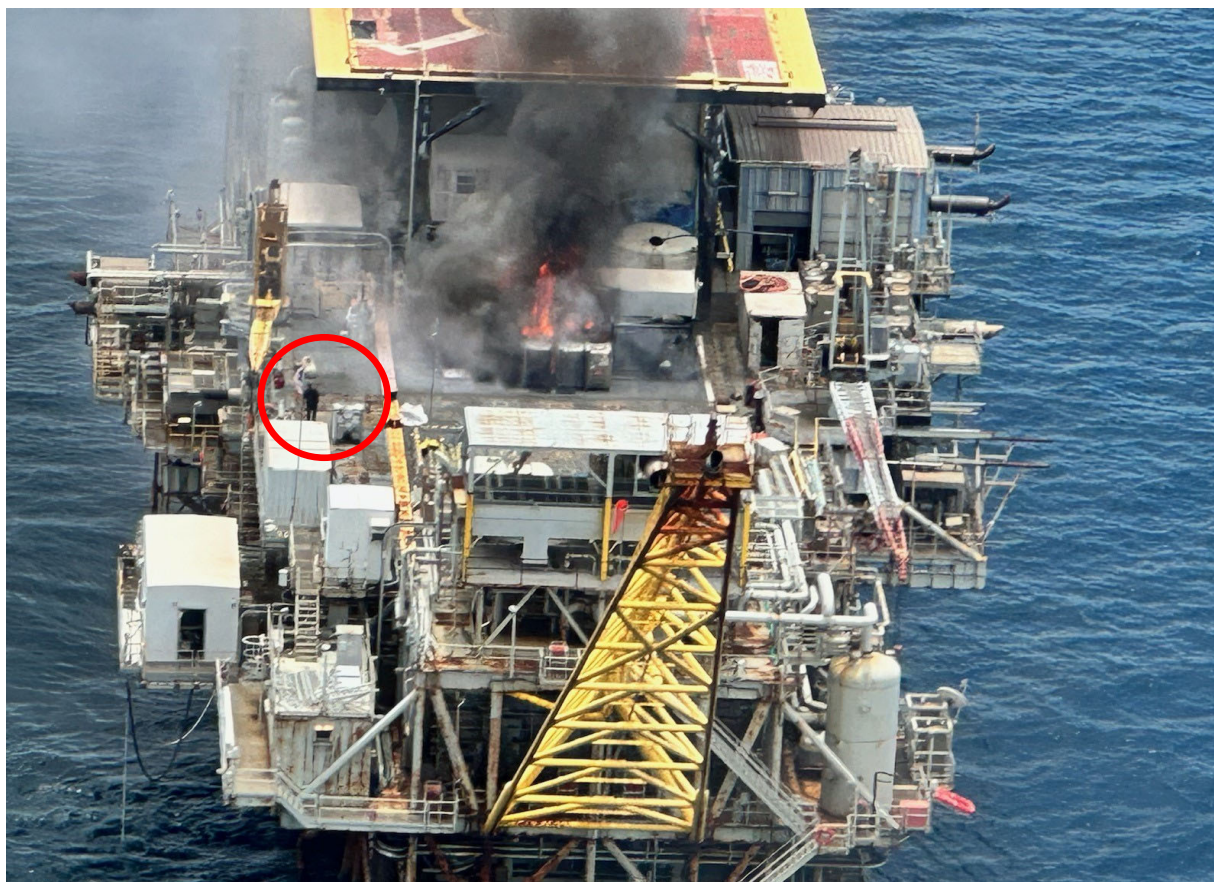




FIRE TRENDS



FIRE- 7/22/2023



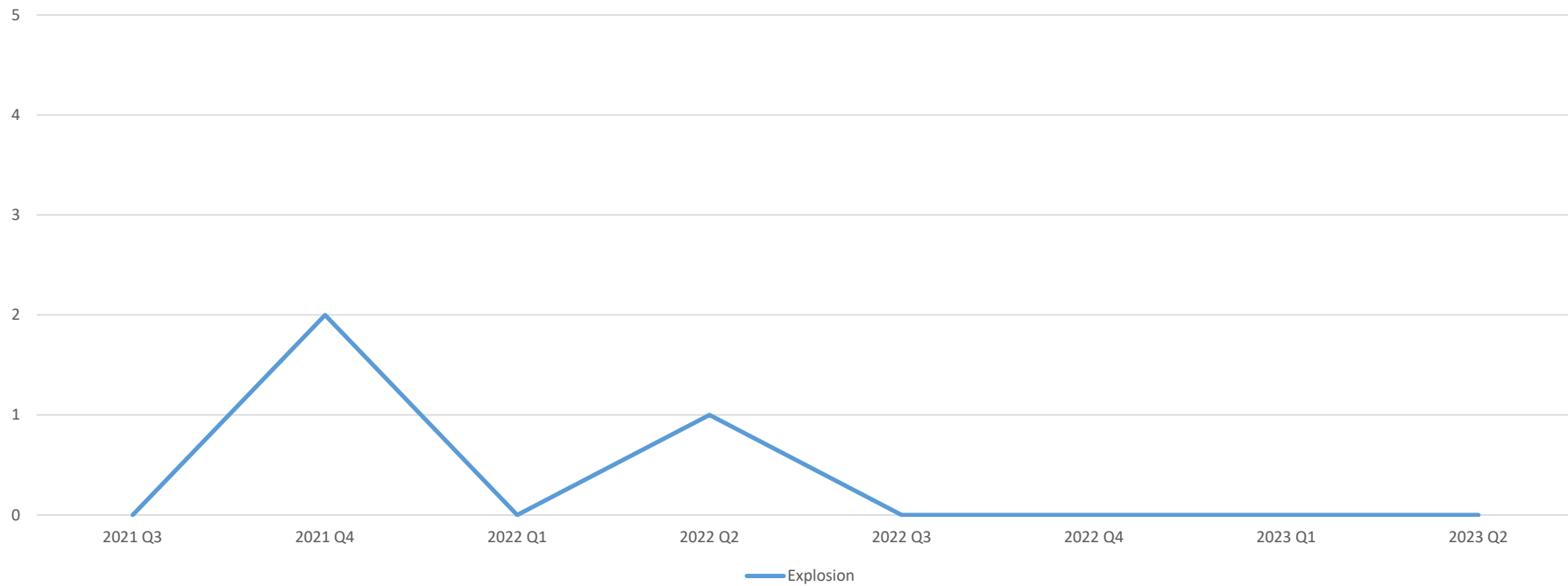
FIRE / INJURY – 6/30/2023



EXPLOSION RATES BY ROLLING QUARTER



Incidents by Quarter

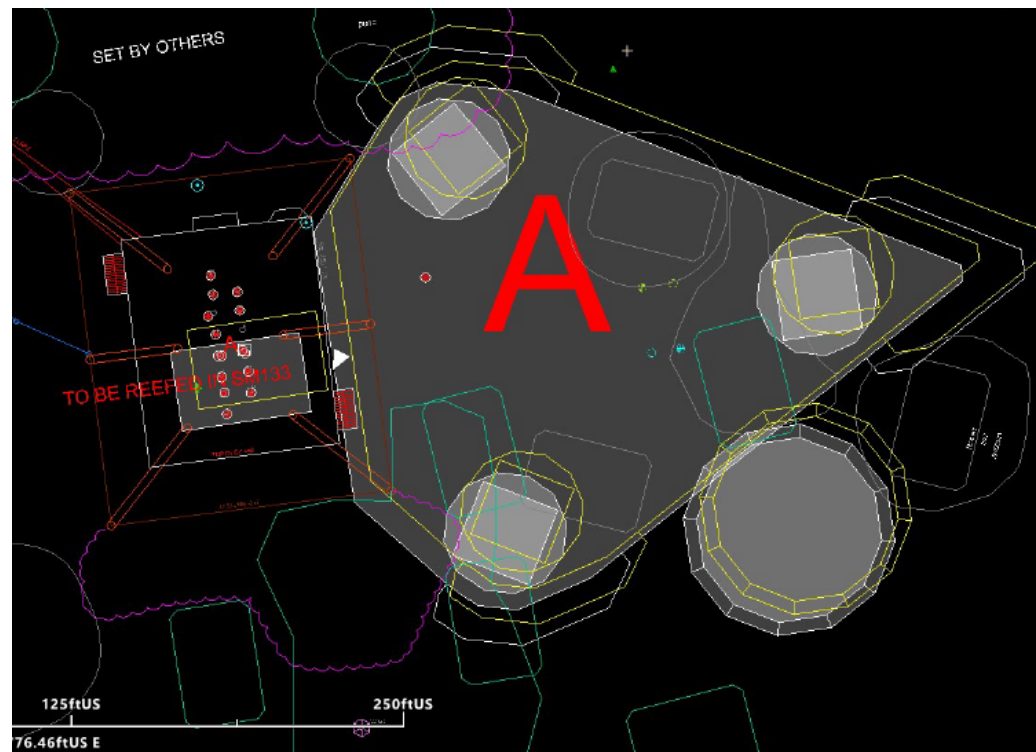




COLLISION RATES BY ROLLING QUARTER

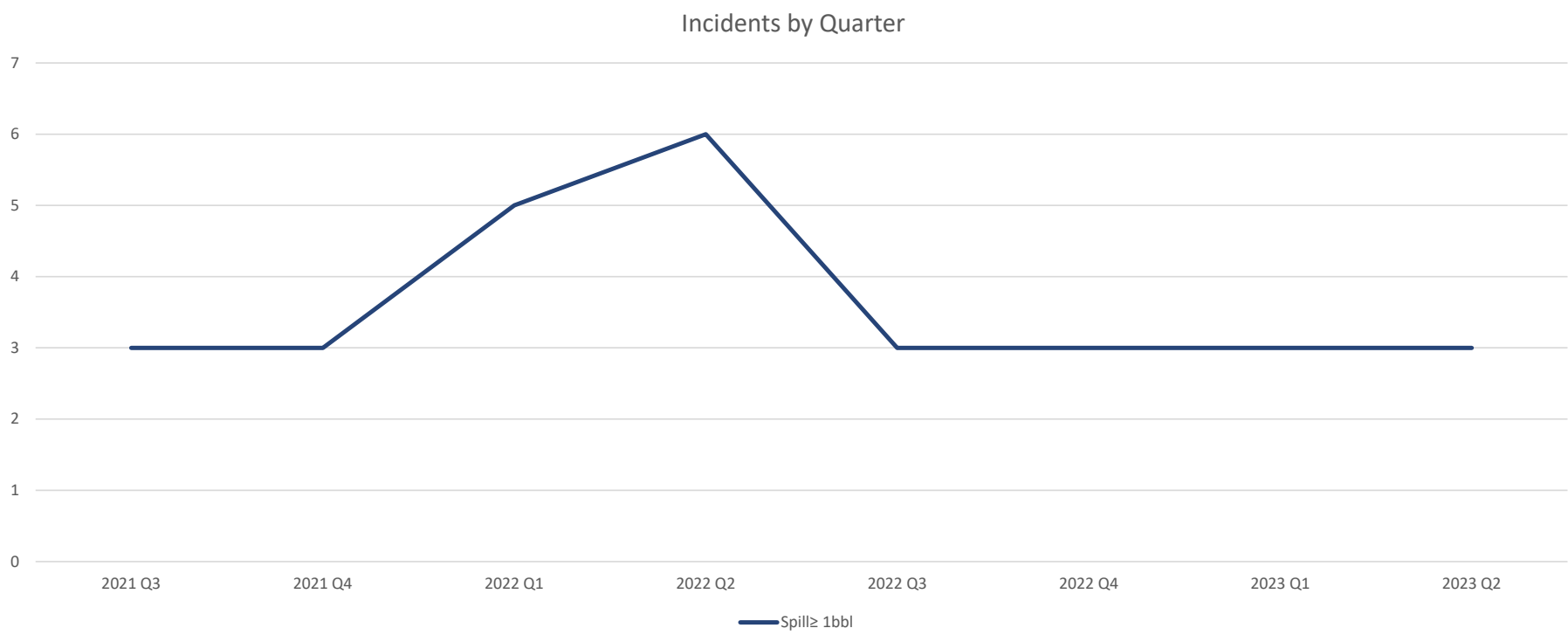


COLLISION – 7/11/2023,



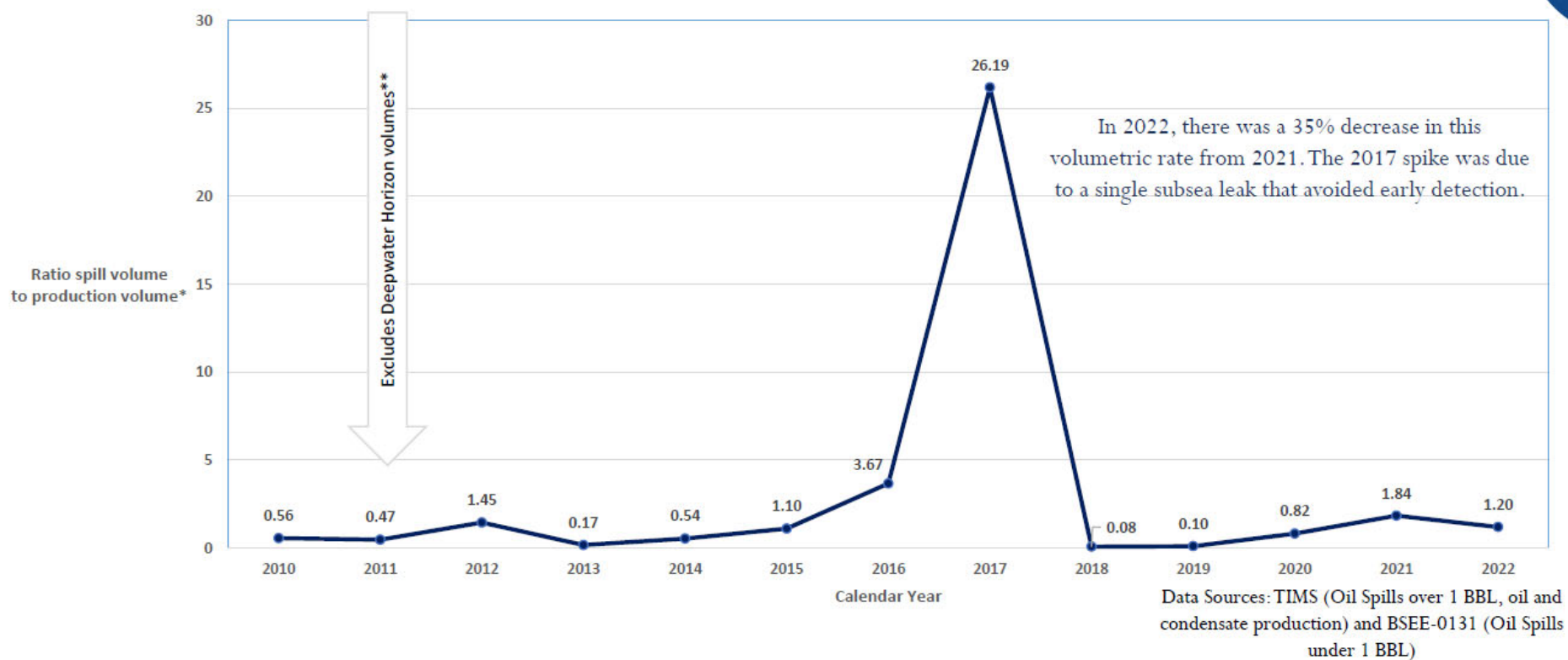


SPILL >1 BBL RATES BY ROLLING QUARTER





POLLUTION TRENDS



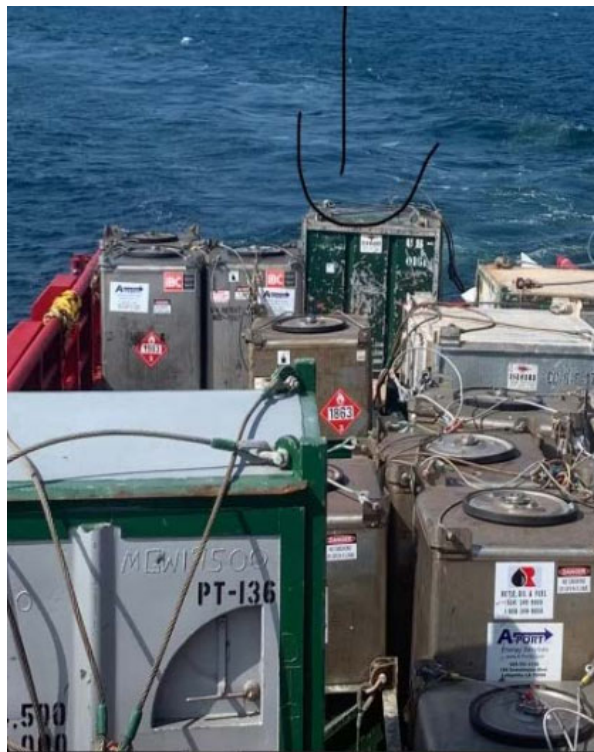
POLLUTION – 7/25/23



POLLUTION – 7/25/23



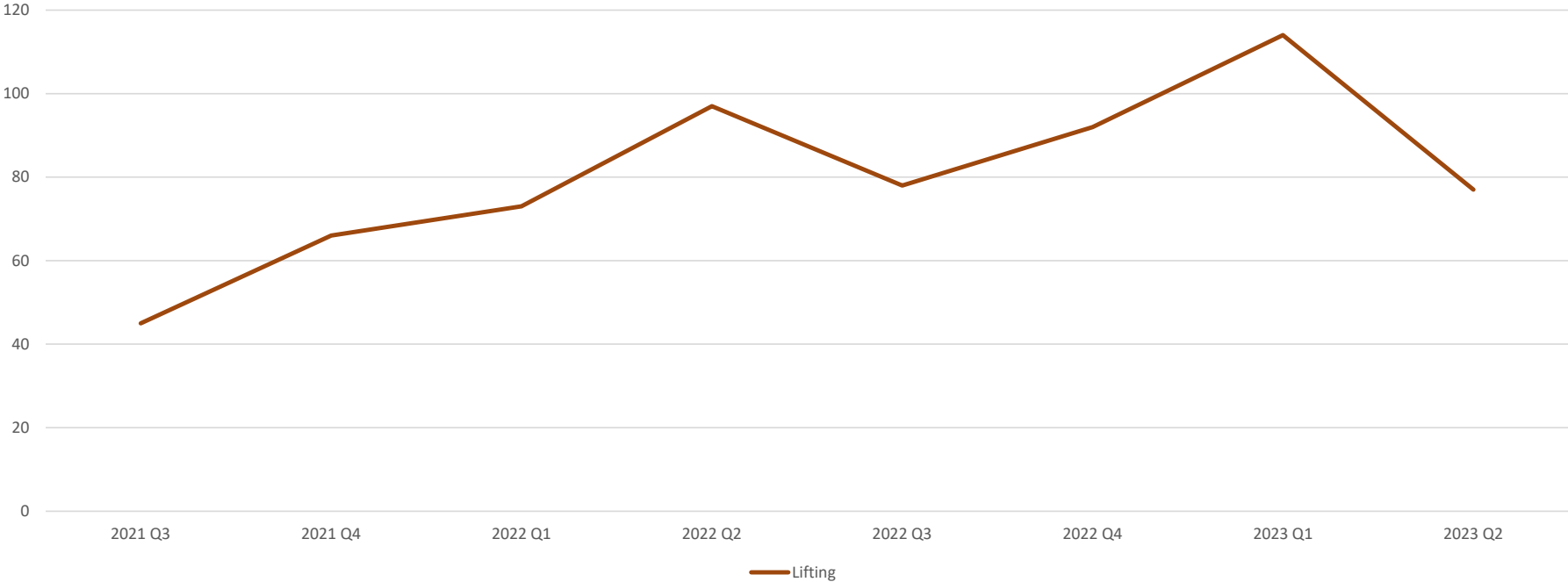
LIFTING / POLLUTION – 6/9/2023





LIFTING RATES BY ROLLING QUARTER

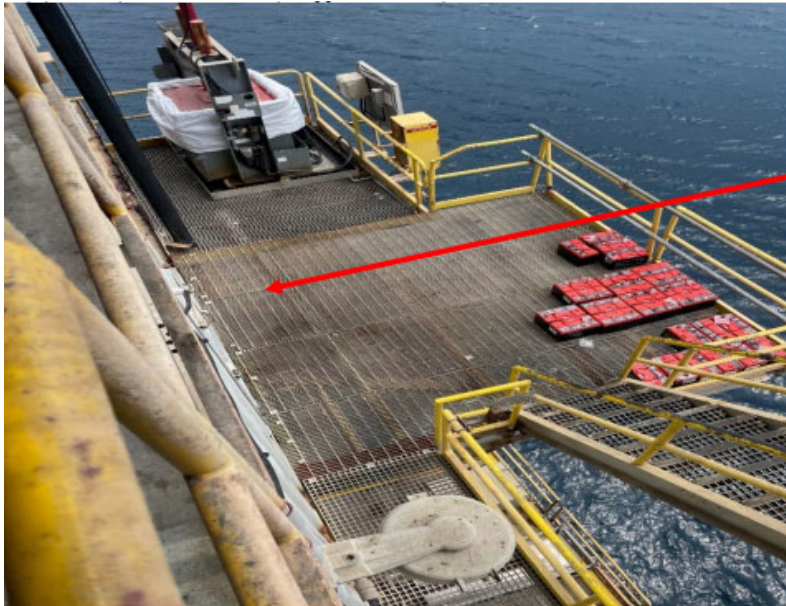
Incidents by Quarter



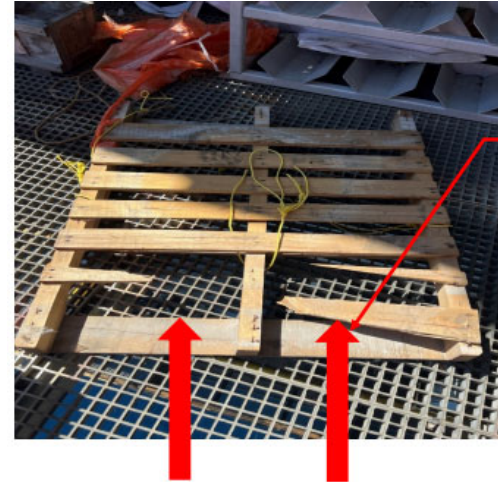
LIFTING - 6/4/2023



LIFTING – 6/5/2023



Incident Location.



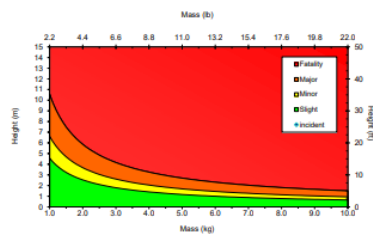
Direction of choker straps through pallet.



Plastic straps that were used around the batteries to secure them.



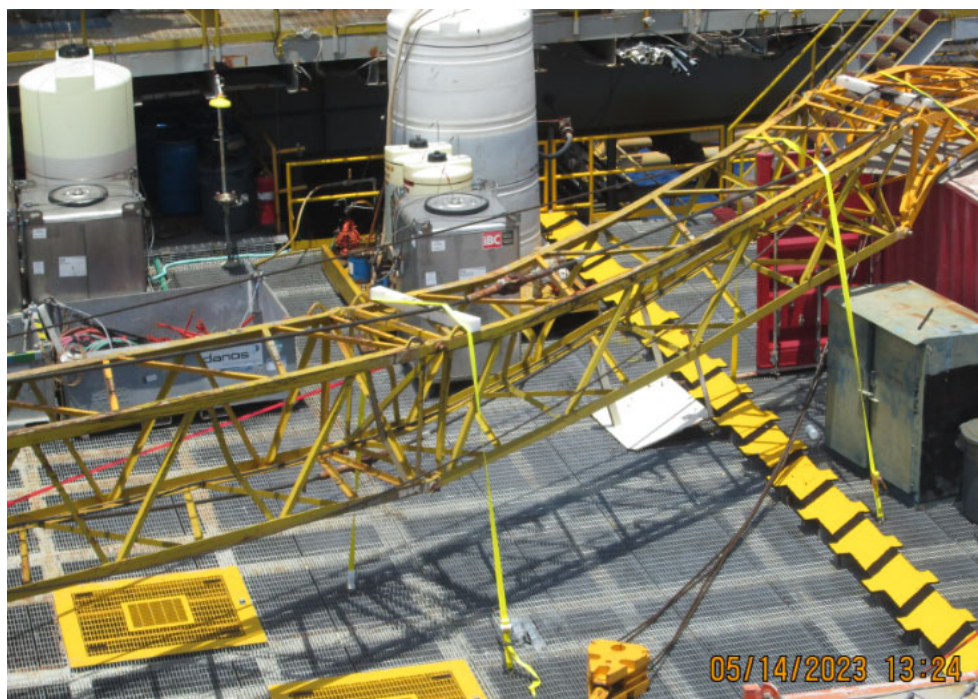
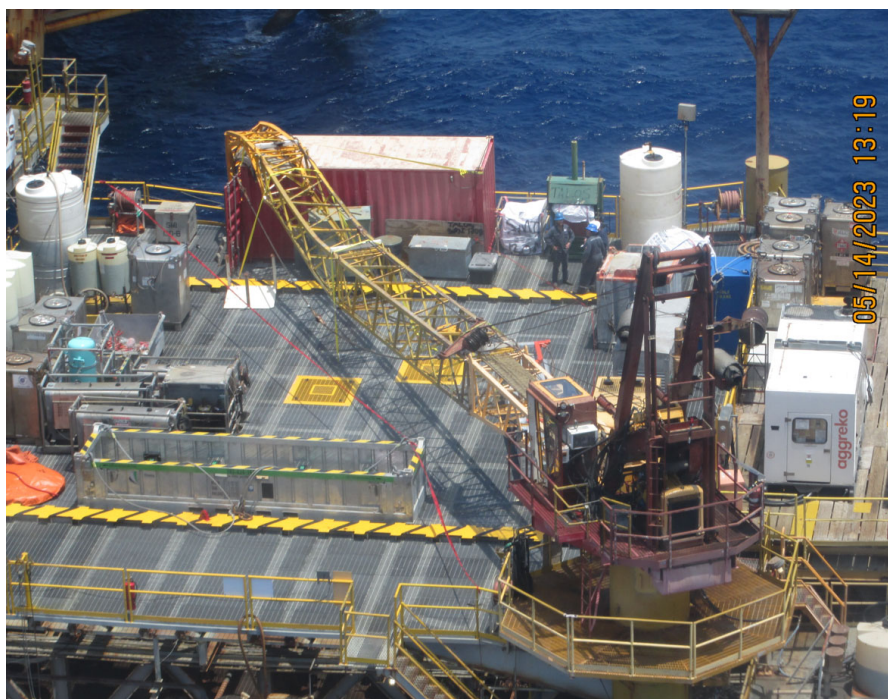
Outcome Calculator	
Height	6
Mass	80.5
Outcome	Fatality - 45% (0.45)



LIFTING – 6/7/2023



LIFTING – 5/12/2023

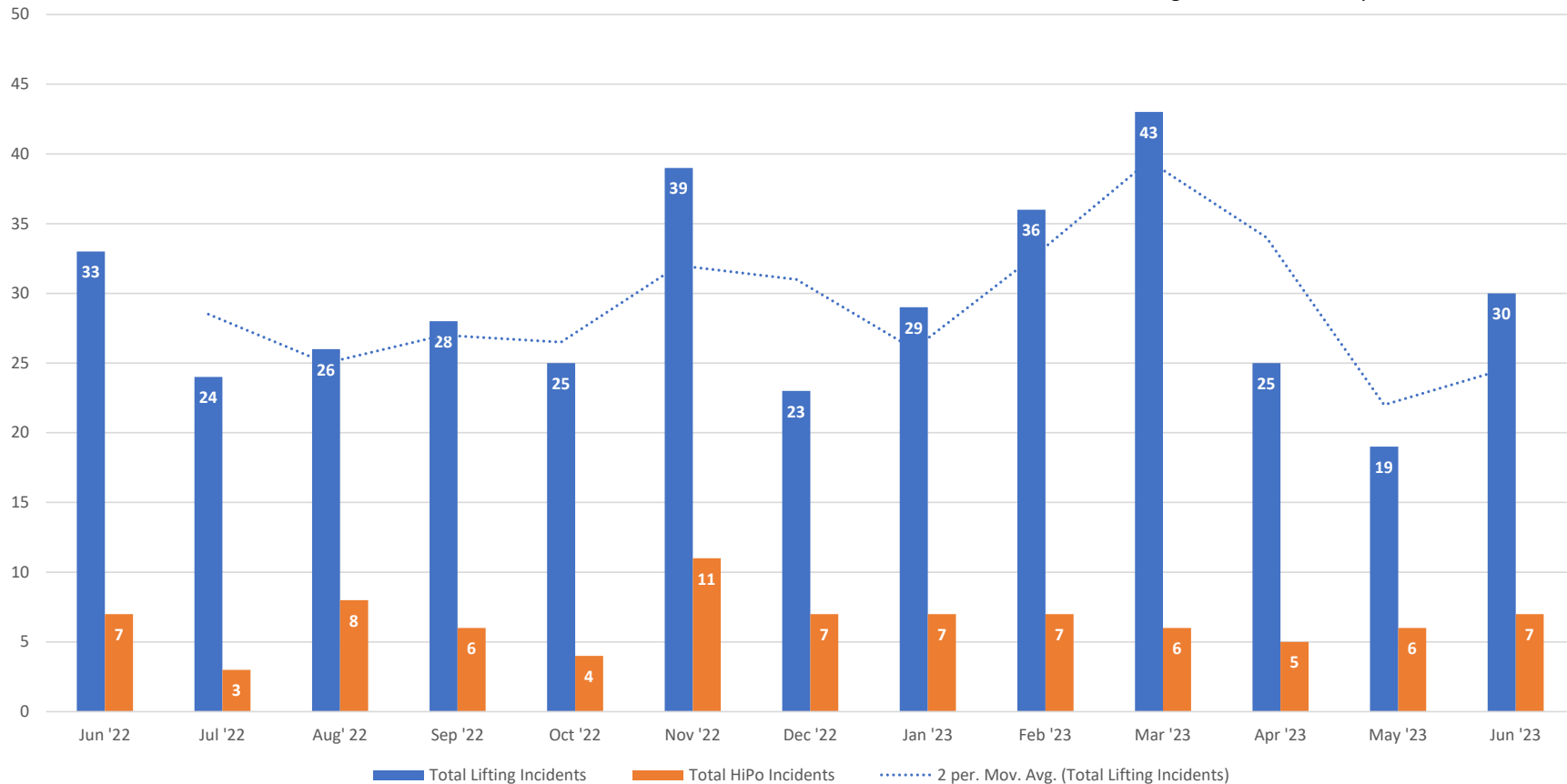


LIFTING INCIDENTS – PREVIOUS 13 MONTHS



Monthly Lifting Incidents and HiPo Incidents

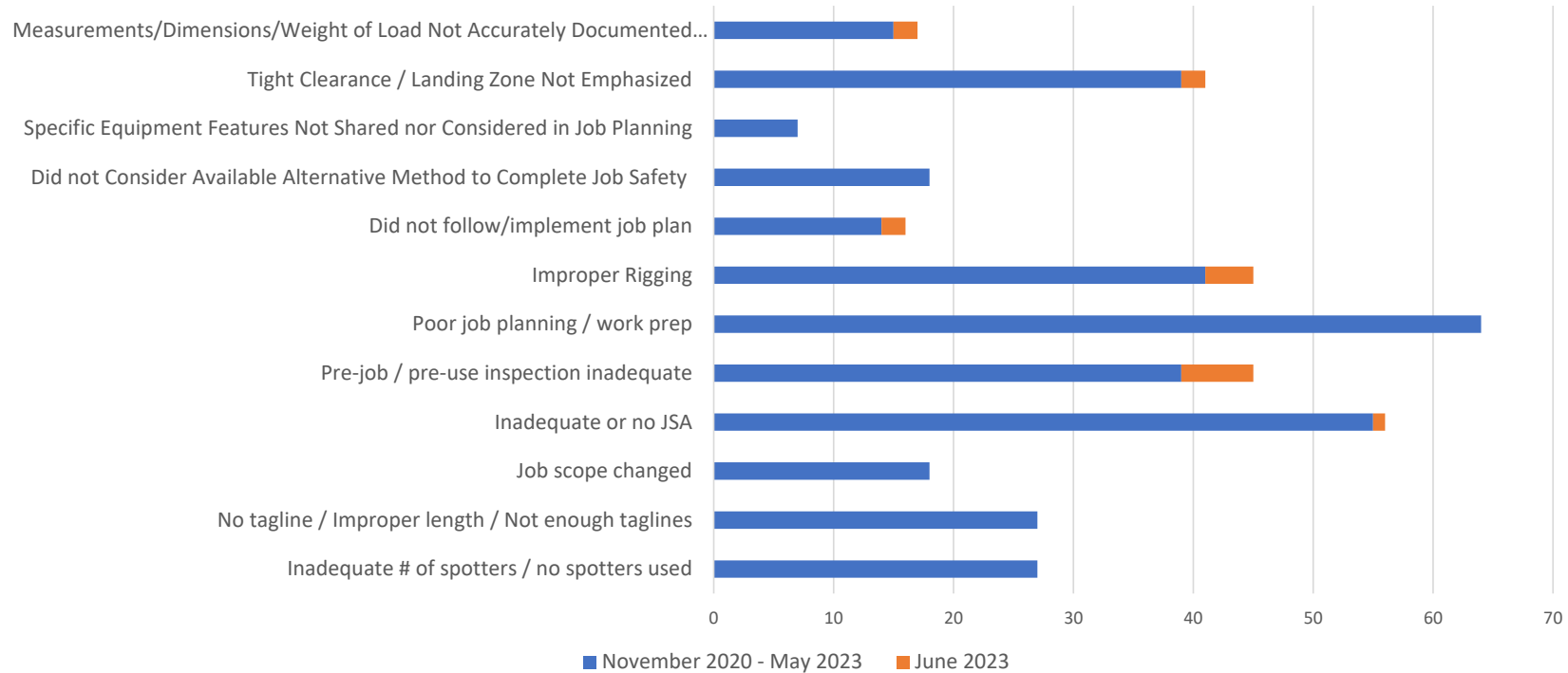
Average **25** incidents per month
Average **6** HiPo incidents per month



JUNE 2023 CAUSAL FACTORS



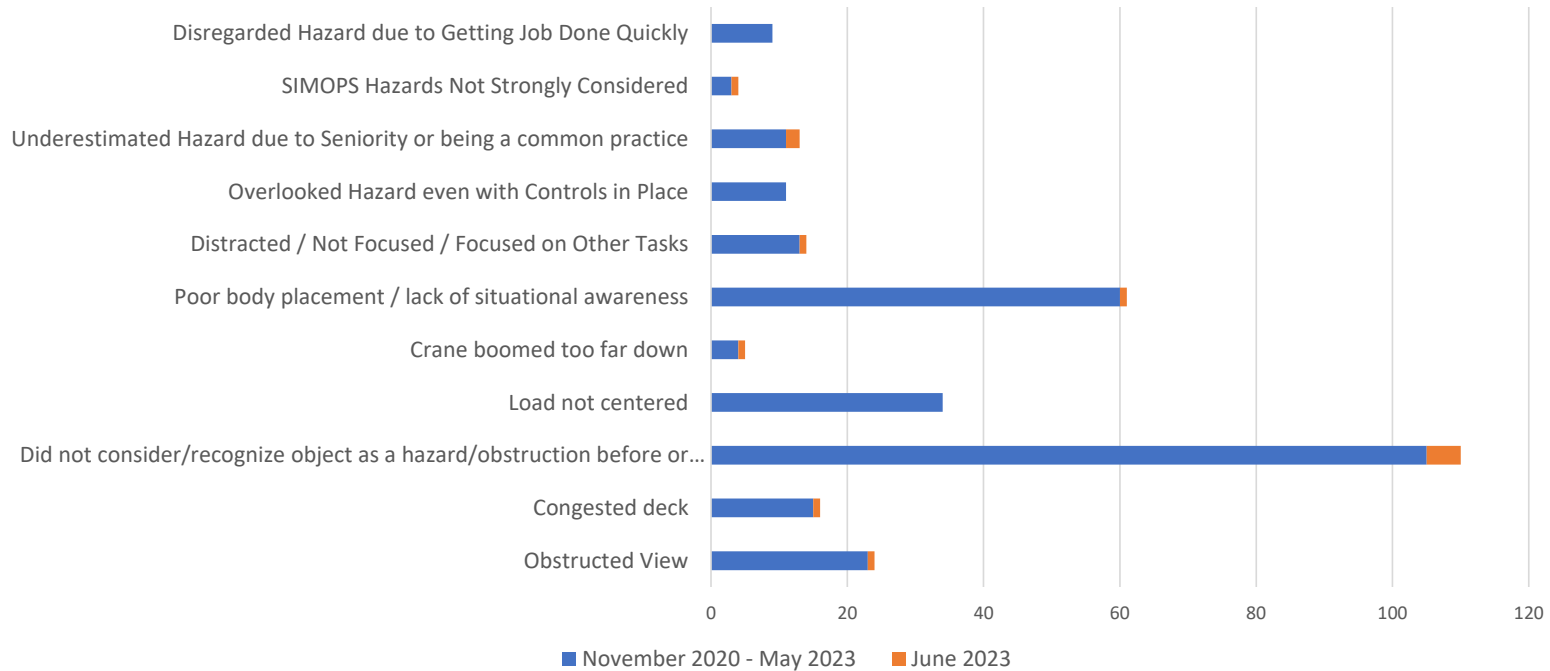
Work Direction Subcategories



JUNE 2023 CAUSAL FACTORS



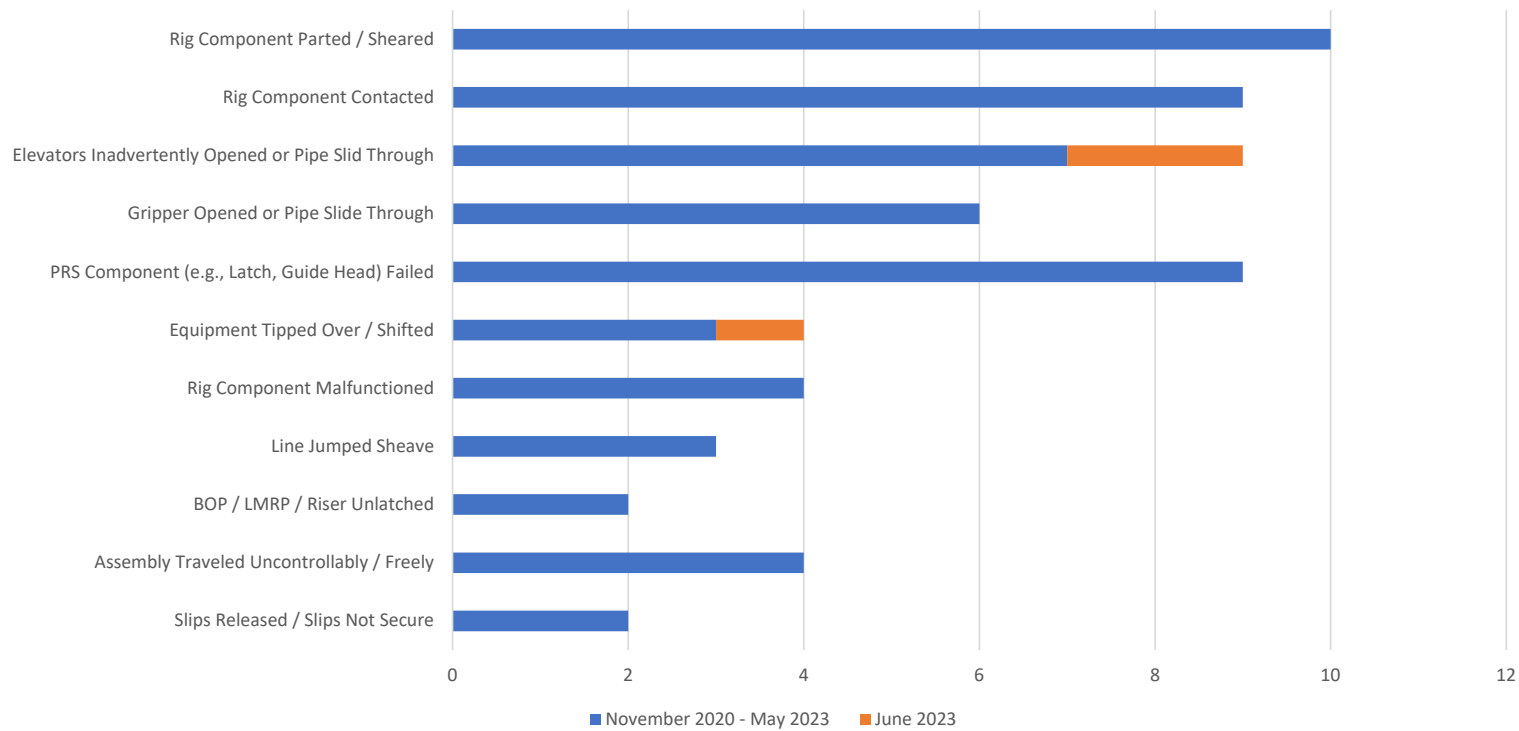
Hazard Recognition Subcategories



JUNE 2023 CAUSAL FACTORS



Rig Associated Equipment Failures Breakdown

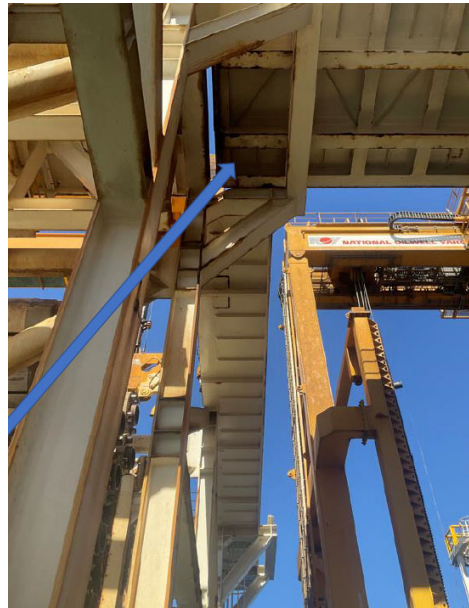


HIPO LIFTING – 6/12/23

Riser Bridge was Being Lowered.



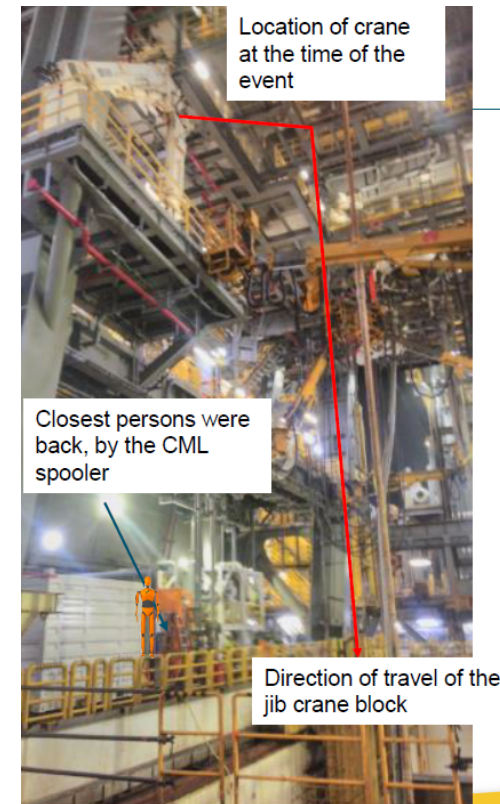
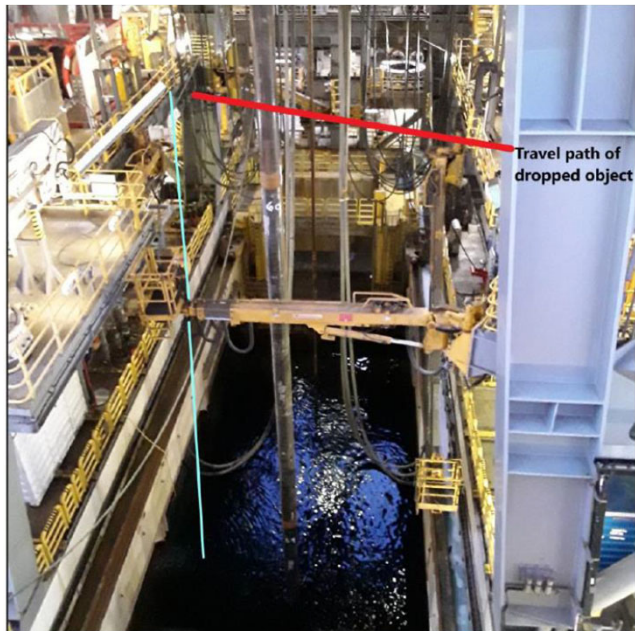
Location of Port Stairs when they were tipped



The bridge was not installed at the time of the drop. The bridge was being installed. The stairs were tipped and fell through this location 43 ft to the riser deck below



HIPO LIFTING – 6/19/23





HIPO LIFTING – 6/22/23



Damage to 16" casing

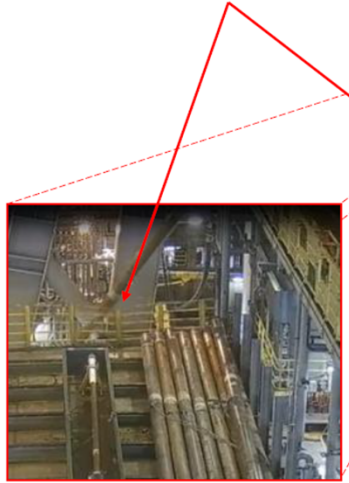


Damage to light bracket (2nd angle)



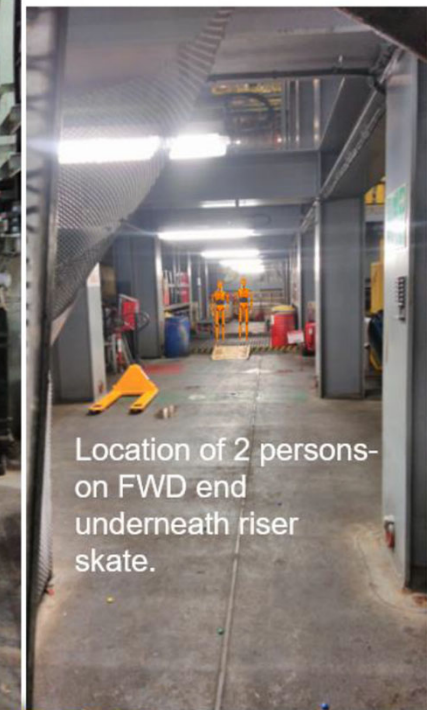
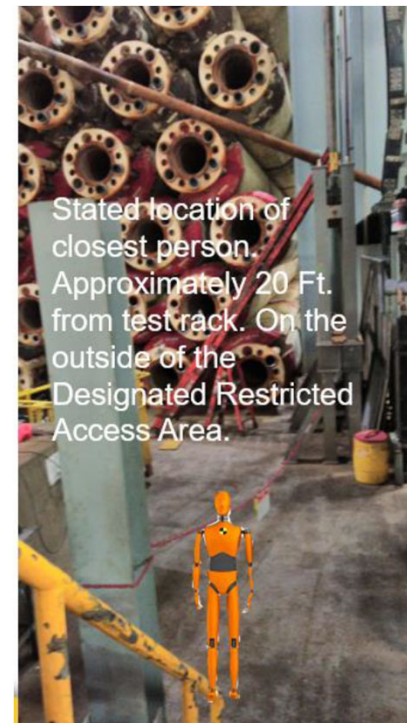
Damage to whip line safety latch

16" double impacting aft pipe deck handrail



Personnel positioned in established Safe step back area

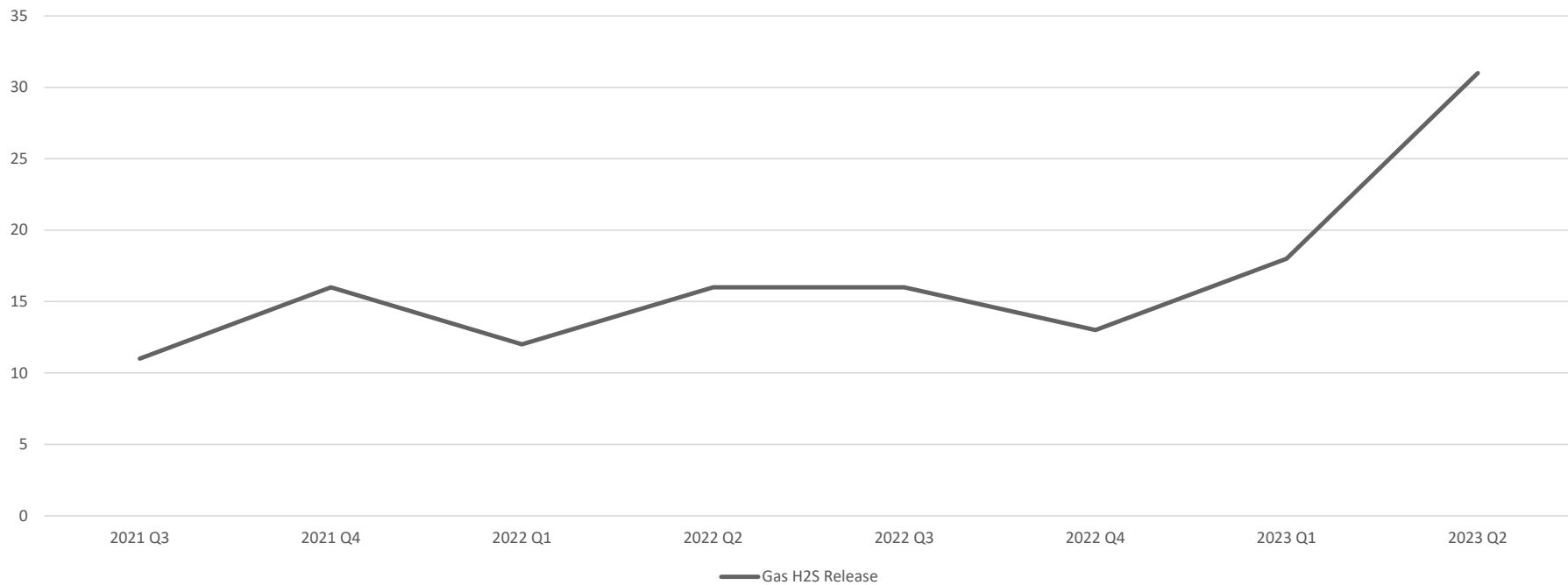
HIPO LIFTING – 6/22/23



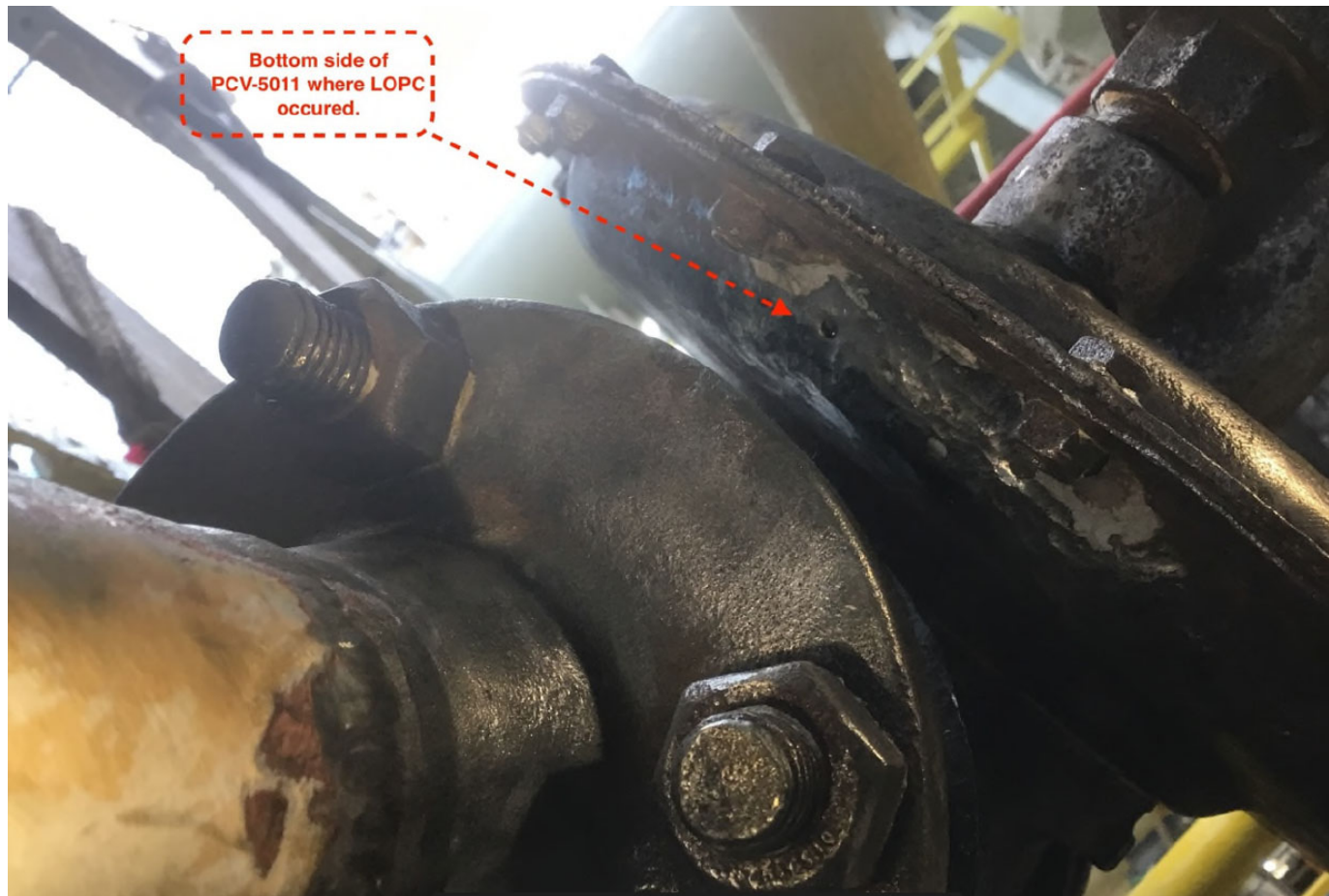
GAS/H2S RELEASE RATES BY ROLLING QUARTER



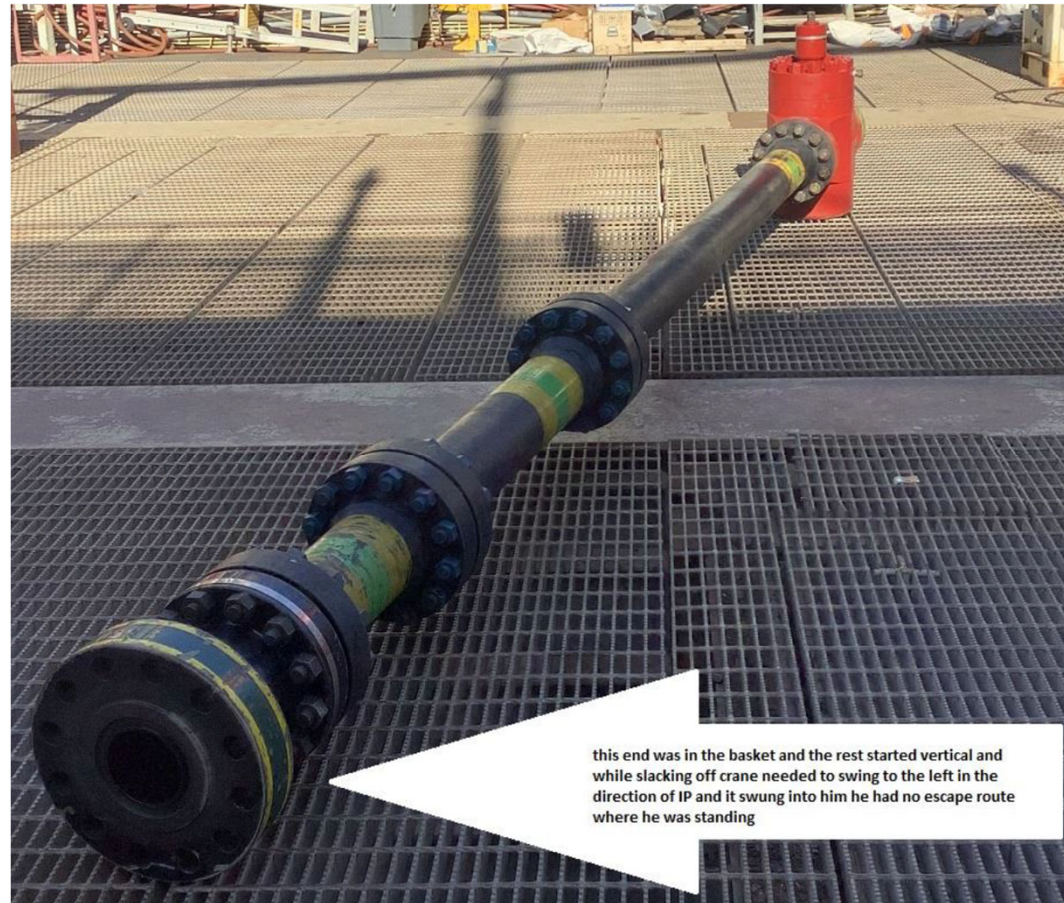
Incidents by Quarter



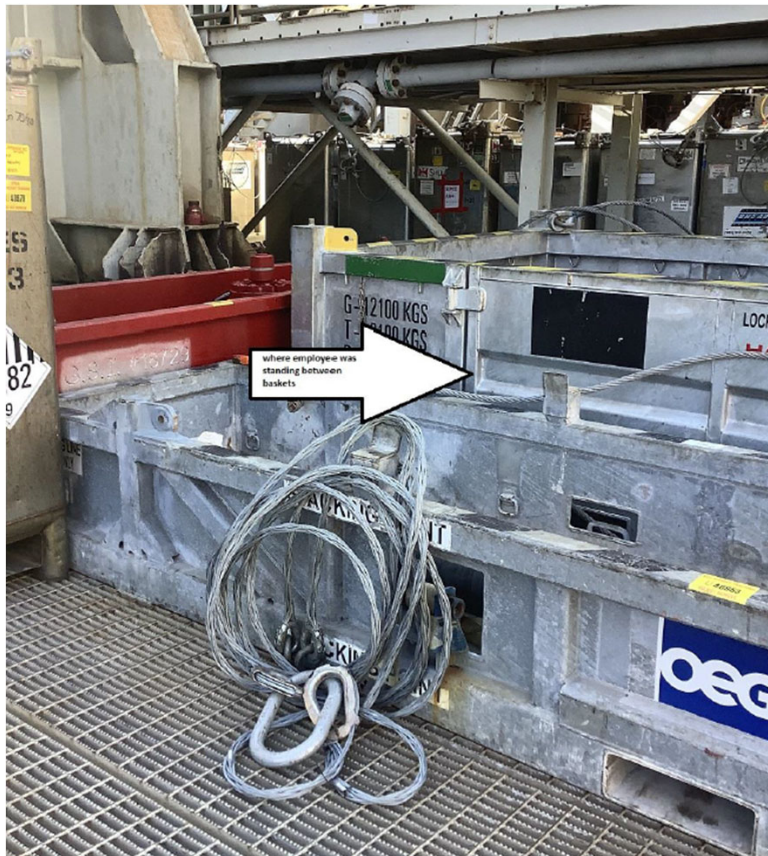
GAS RELEASE – 7/10/2023



RECENTLY COMPLETED 2010 INVESTIGATION



RECENTLY COMPLETED 2010 INVESTIGATION



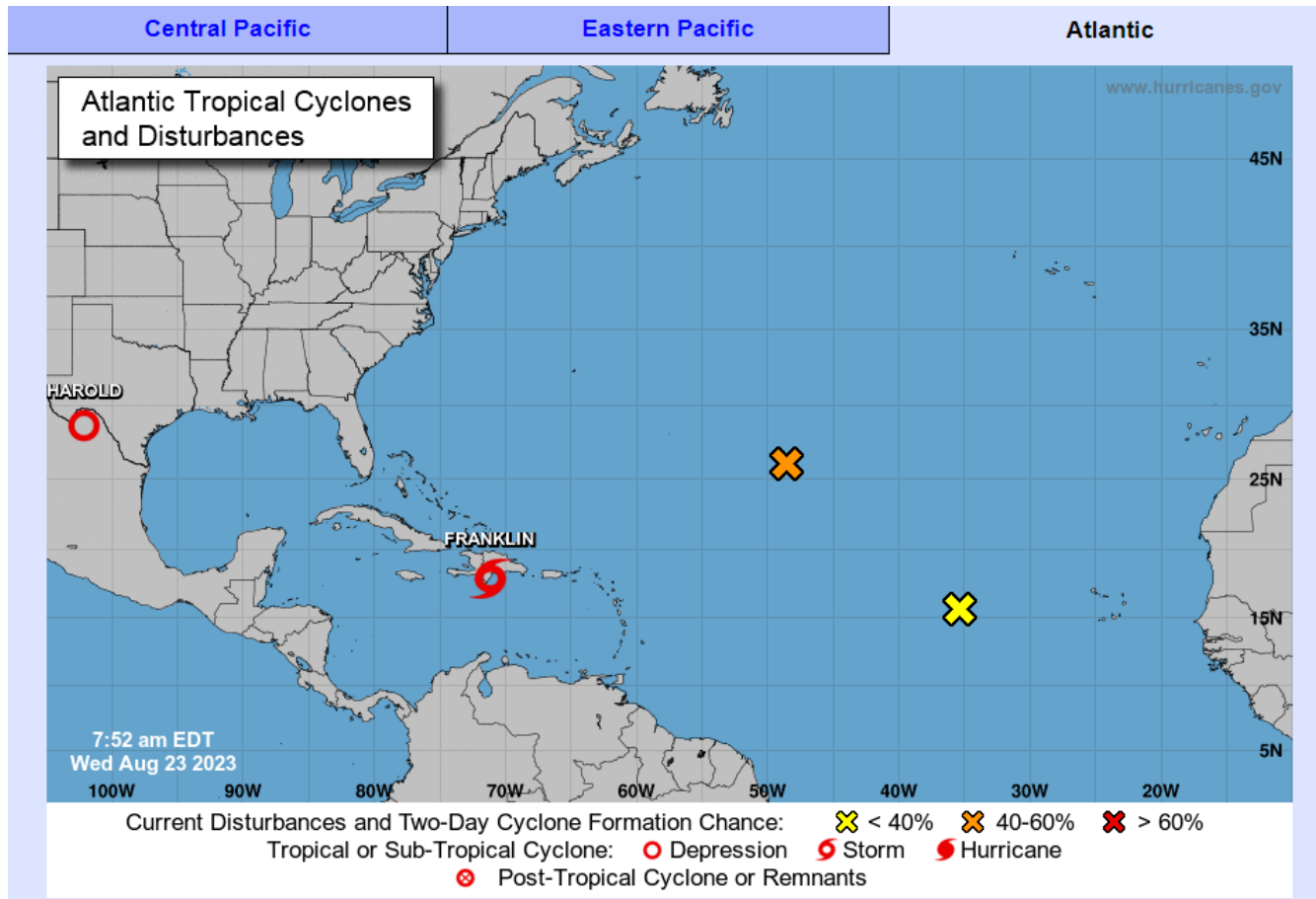


RECENTLY COMPLETED 2010 INVESTIGATION

- This is a High Potential Incident which lead to the IP sustaining multiple injuries – L4 Fracture, Traumatic Hernia, and Pelvic Muscle Tears
- Probable Cause: Congested workspace, where baskets were positioned closely together leaving no space to work around increasing the potential for a pinch point or crushing event
- Contributing Cause: Designated Signaling Person did not identify and communicate to crane operator that rigger was in a pinch point and in danger of injury

<https://www.bsee.gov/what-we-do/incident-investigations/offshore-incident-investigations/district-investigation-reports>

THEME – DON'T BE AFRAID TO BE A BEGINNER





BSEE Website:
www.bsee.gov



[@BSEEGov](https://twitter.com/BSEEGov)



[BSEEGov](https://www.youtube.com/BSEEGov)



[Bureau of Safety and
Environmental
Enforcement](https://www.linkedin.com/company/bureau-of-safety-and-environmental-enforcement)



[BSEEGov](https://www.facebook.com/BSEEGov)



Bureau of Safety and Environmental Enforcement
Promoting Safety, Protecting the Environment and Conserving Offshore Resources